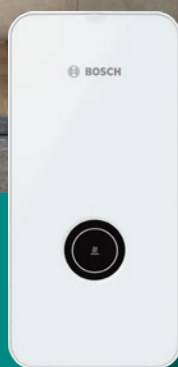
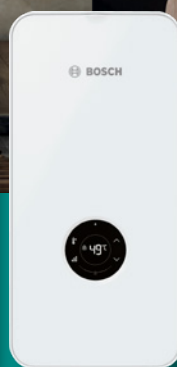


**NEW**

3-Phase Electric Instantaneous Water Heater



Tronic 4000



Tronic 7000



Tronic 8500i

Product Features*

- Engineered in Germany for superior quality and reliability.
- ClickFix 2.0 installation for quick and easy three-step setup.
- AquaStop® safety system (7000 & 8500i) to prevent leaks and water damage.
- Built-in Wi-Fi connectivity for control via the HomeCom Easy app.
- Multifunctional display for temperature control and usage tracking.
- Custom temperature settings available in 50°C and 60°C options.
- Compact, space-saving design for seamless home integration.



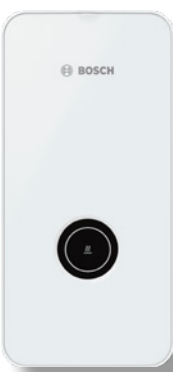
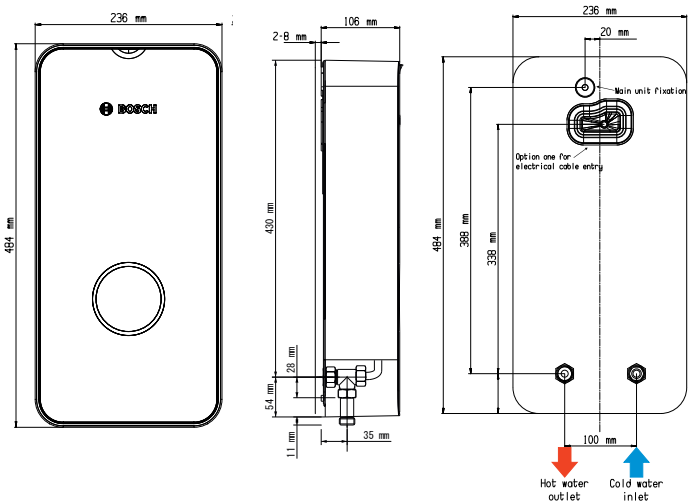
*Features vary by model.

bosch-homecomfort.com.au
PH: 1300 30 70 37



3-Phase Electric Instantaneous Water Heater

Introducing the Bosch Tronic Series – designed for Australian conditions to deliver reliable, energy-efficient hot water on demand.



Tronic 4000

Model		TR4001 L 13 ESOB	TR4001 L 18 ESOB	TR4001 L 27 ESOB
Part number		7736507505	7736507506	7736507507
Temperature settings	°C	Not adjustable 50°C	Not adjustable 50°C	Not adjustable 50°C
Rated output power (400/415V)	Kw	13/14	18/19.4	27/27.5
Circuit breaker (400/415V)	A	20/20	25/32	40/40
Switch on flow rate	L/min	2.5		
IP rating		IP25		
HxWxD	mm	484 x 236 x 106		
Weight	Kg	3.3		



Tronic 7000

Model		TR7001 L 18 DESOAB	TR7001 L 27 DESOAB	TR7001 18 DESOAB	TR7001 27 DESOAB
Part number		7736507508	7736507509	7736507510	7736507511
Temperature settings	°C	Adjustable up to 50°C	Adjustable up to 50°C	Adjustable up to 60°C	Adjustable up to 60°C
Rated output power (400/415V)	Kw	18/19.4	27/27.5	18/19.4	27/27.5
Circuit breaker (400/415V)	A	25/32	40/40	25/32	40/40
Switch on flow rate	L/min	2.5			
IP rating		IP25			
HxWxD	mm	484 x 236 x 106			
Weight	Kg	3.8			



Tronic 8500i

Model		TR8501i 18 DESOAB	TR8501i 27 DESOAB
Part number		7736507512	7736507513
Temperature settings	°C	Adjustable up to 60°C	Adjustable up to 60°C
Rated output power (400/415V)	Kw	18/19.4	27/27.5
Circuit breaker (400/415V)	A	25/32	40/40
Switch on flow rate	L/min	2.5	
IP rating		IP25	
HxWxD	mm	484 x 236 x 106	
Weight	Kg	3.8	



5 year parts and labour warranty when used in a residential application. 1 year parts and labour warranty for commercial application. For full terms and conditions please contact Bosch Customer Contact Centre on 1300 30 70 37 in Australia if you have any queries in relation to this warranty or contact us using the online form at <https://www.bosch-homecomfort.com/au/en/residential/customer-support/warranty-and-servicing/>