

Connecting cable

7736504943



BOSCH

Installation instructions

Contents

1	Explanation of symbols and safety instructions	3
1.1	Guideline to symbols	3
1.2	Safety instructions	3

2	Information about the accessory	4
2.1	Cable specifications	4
2.2	Proper use	4

3	Scope of delivery	4
----------	--------------------------------	----------

4	Installation instructions	5
4.1	Safety instructions	5
4.2	Remove the HMI from water heater ..	5

1 Explanation of symbols and safety instructions

1.1 Guideline to symbols

Warnings



Warnings in this document are identified by a warning triangle printed against a grey background.

Keywords at the start of a warning indicate the type and seriousness of the ensuing risk if measures to prevent the risk are not taken.

Keywords at the start of a warning indicate the type and seriousness of the ensuing risk if measures to prevent the risk are not taken. The following keywords are defined and can be used in this document:

- **DANGER** indicates a hazardous situation which, if not avoided, will result in death or serious injury.
- **WARNING** indicates a hazardous situation which, if not avoided, could result in death or serious injury.
- **CAUTION** indicates a hazardous situation which, if not avoided, could result in minor to moderate injury.



NOTICE: Contains no warning triangle and indicates a situation that could result in damage to property or equipment, but no personal injury.

Important information



This symbol indicates important information where there is no risk to people or property. Important information for the proper use of the boiler is also provided in this manual. You will find the information with a symbol shown on the left and bordered by horizontal lines above and below the text.

Additional symbols

Symbol	Explanation
▶	Sequence of steps
→	Cross-reference to other points in this document or to other documents
•	Listing/list entry
–	Listing/list entry (2nd level)

Table 1

1.2 Safety instructions

Installation and commissioning

- ▶ Observe all federal, state and local regulations and standards during installation and operation!
- ▶ Observe all instructions to ensure satisfactory operation.
- ▶ Install and commission heat source and other accessories according to the relevant instructions.
- ▶ Before installing the remote control cable: isolate all poles of heat source and all other BUS subscribers from the power supply, secure against unintentional reconnection and make sure the power supply is disconnected.
- ▶ Electrical components must be installed by a trained electrician and the installation must meet the National Electric Code as well as all applicable local codes and regulations.

Risk of damage from operator error

Operator errors can cause injury and damage to property:

- ▶ Instruct the customer in the functions and operation of the remote control.
- ▶ Make sure that only individuals who can operate the remote control correctly have access to it.

General information

This manual is available in English.

- ▶ Keep this manual for future use.
- ▶ Observe the safety instructions of this manual before putting the heating appliance into operation.

If the information in this manual is not followed exactly, a fire or explosion may result causing property damage, personal injury or loss of life.

- ▶ Do not store or use gasoline or other flammable vapors and liquids in the vicinity of this or any other appliance.
- ▶ What to do if you smell gas
 - Do not try to light any appliance.
 - Do not touch any electrical switch; do not use any phone in your building.
 - Immediately call your gas supplier from a neighbor's phone. Follow the gas supplier's instructions.
 - If you cannot reach your gas supplier, call the fire department.
- ▶ Installation and service must be performed by a trained and certified heating contractor, service agency or the gas supplier.

Risk of scalding

- ▶ If running at DHW temperatures above 104 °F (40 °C) ask a trained and certified heating contractor to install a tempering valve to prevent scalding.
- ▶ When the **thermal disinfection** function is enabled, DHW temperatures above 140 °F (60 °C) can occur.

Risk of damage due to operator error

Operator errors can result in personal injury and damage to property.

- ▶ Ensure that children never play with or operate this appliance unsupervised.
- ▶ Ensure that only people who know how to operate this appliance correctly have access to it.
- ▶ Never modify any parts.

2 Information about the accessory

2.1 Cable specifications

Length	33 feet (10 meters)
Characteristics	UL 21179 / 2x20AWG

Table 2 Cable specifications

2.2 Proper use

The cable is intended to connect the water heater with the HMI.

Any other purpose is considered improper use. Any resulting damage is excluded from the manufacturer's warranty.

3 Scope of delivery

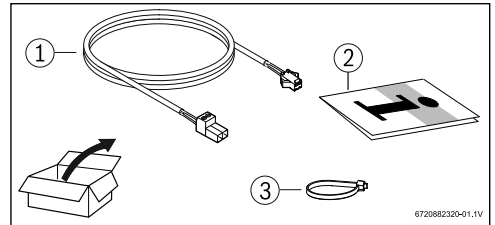


Fig. 1 Scope of delivery

- [1] Cable
- [2] Technical documentation
- [3] Cable tie

4 Installation instructions

The HMI is inside the water heater.

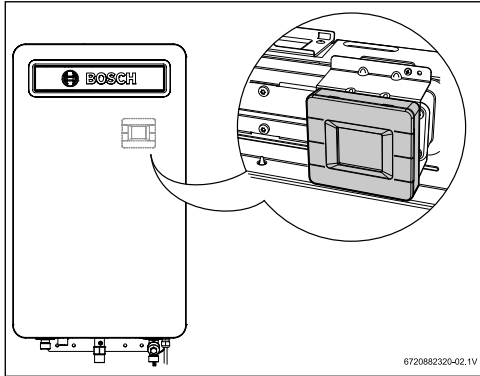


Fig. 2 Outdoor appliance

4.1 Safety instructions

Before removing the front cover:

- ▶ Disconnect the appliance from the power supply.
- ▶ Turn off the gas shut-off valve.

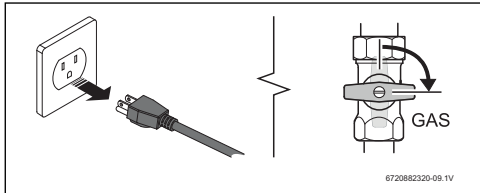


Fig. 3

- ▶ Disconnect cable from the HMI board.

4.2 Remove the HMI from water heater

- ▶ Loosen the two Phillips head screws located on the bottom of the front cover.
- ▶ Remove the front cover by lifting and pulling towards you.

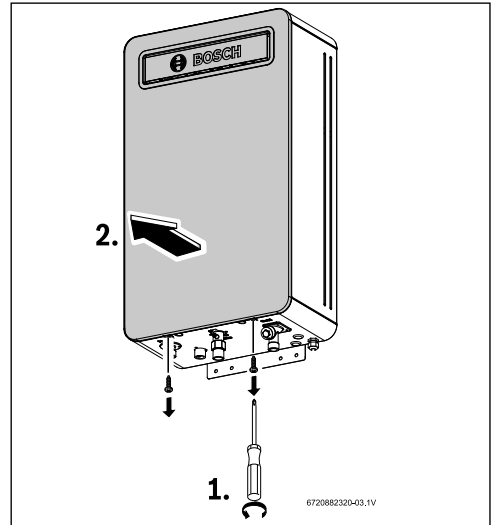


Fig. 4 Remove front cover

- ▶ Use a screw driver to open HMI.

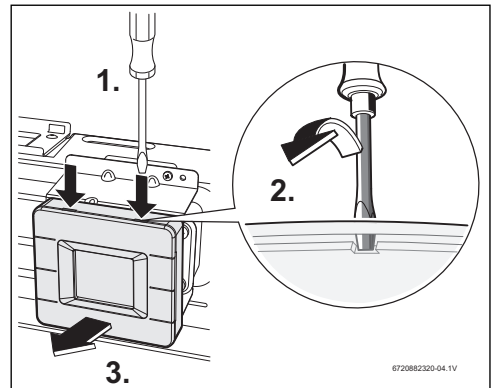


Fig. 5 Open HMI

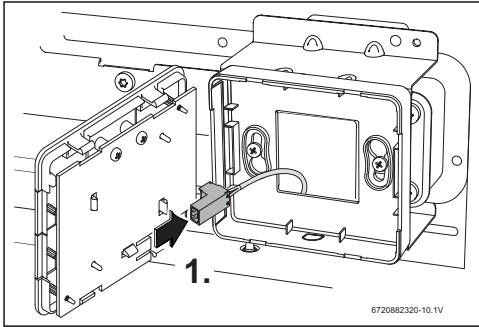


Fig. 6 Disconnect cable

- ▶ Remove two Phillips screws from the HMI support base.

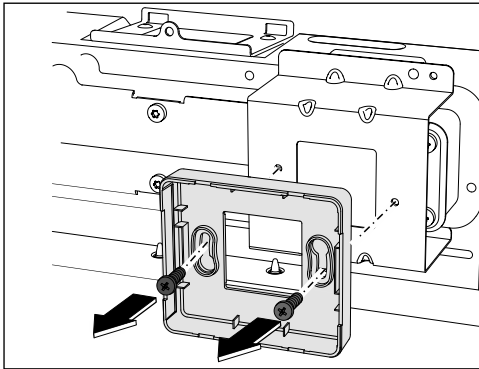


Fig. 7 Removing base

- ▶ Secure the internal cable with a cable tie.

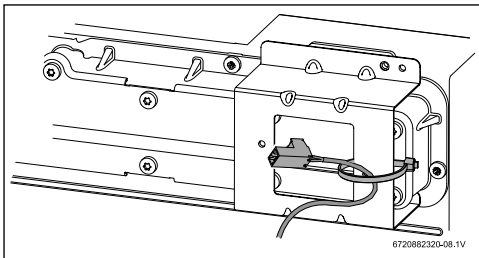


Fig. 8 Secure internal cable

- ▶ Choose the wire as center to mount the base.

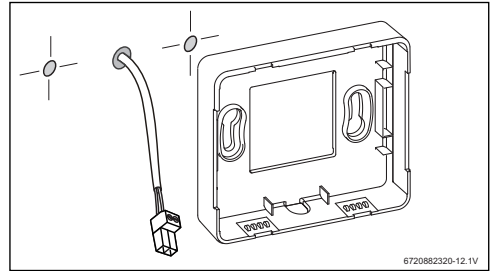


Fig. 9 Wires inside the wall

- ▶ Remove the plastic knockout, when wires are outside the wall.

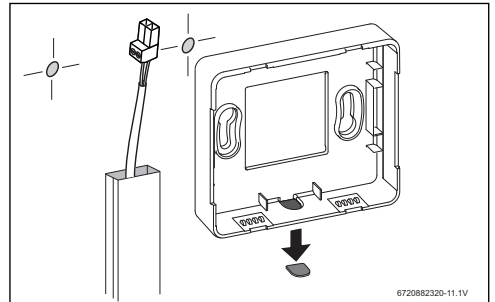


Fig. 10 Wires outside the wall

- ▶ Mount the HMI base onto the wall.

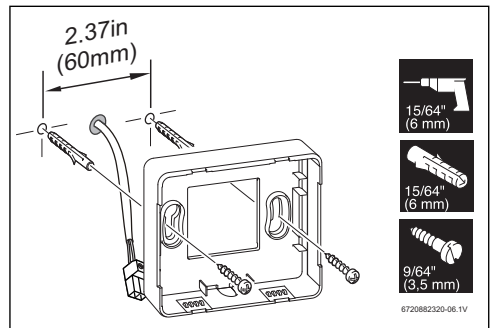


Fig. 11 Installing base

- ▶ Connect the cable to the HMI.

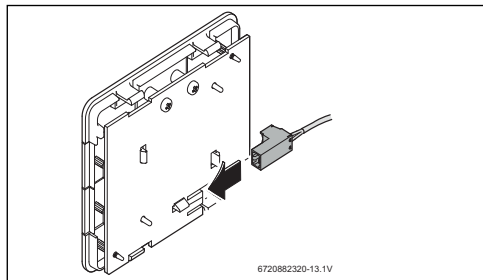


Fig. 12 Connection of the HMI

- ▶ Assemble the HMI interface to the base.

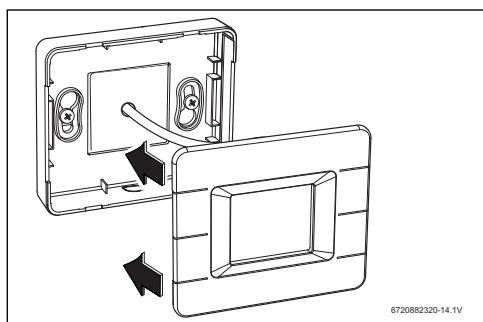


Fig. 13 Assemble HMI

- ▶ Connect the cable to the water heater and HMI.

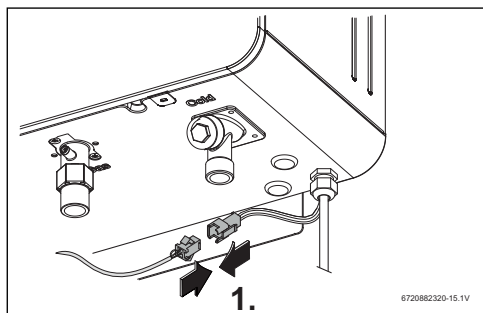


Fig. 14 Connect cable

- ▶ Connect the cable to the water heater and HMI.

After mounting the front cover in the appliance:

- ▶ Connect the appliance to the power supply.

- ▶ Turn on the gas shut-off valve.

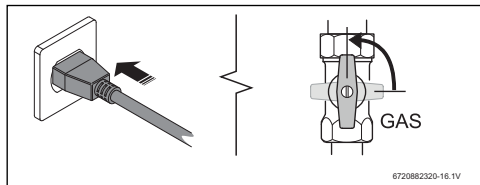


Fig. 15 Connect the appliance



6720882320

Bosch Thermotechnology Corp.
50 Wentworth Avenue
Londonderry, NH 03053
Tel. 866-330-2730
www.boschheatingandcooling.com
U.S.A.

Products manufactured by
Bosch Termotecnologia SA
Estrada de Cacia
3800-533 Cacia
Portugal

Bosch Thermotechnology Corp. reserves the right
to make changes without notice due to continuing
engineering and technological advances.