

Service bulletin

Gas conversion



BOSCH

Introduction

- ▶ This procedure must be performed by a licensed gas technician
- ▶ Failure to properly calibrate heater's CO₂ level may result in a hazardous condition.

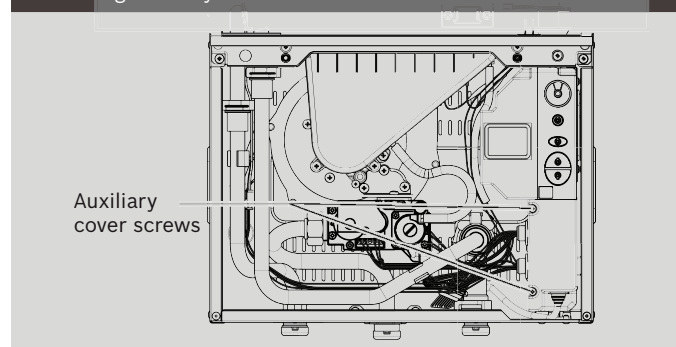
Tools needed:

- ▶ Philips head screw driver
- ▶ #40 Torx driver
- ▶ Digital combustion gas analyzer (Not CO detector)

Preparation

1. Turn power switch to off (O) position and unplug power cord.
2. Remove front cover (see installation manual).
3. Remove control board access cover.

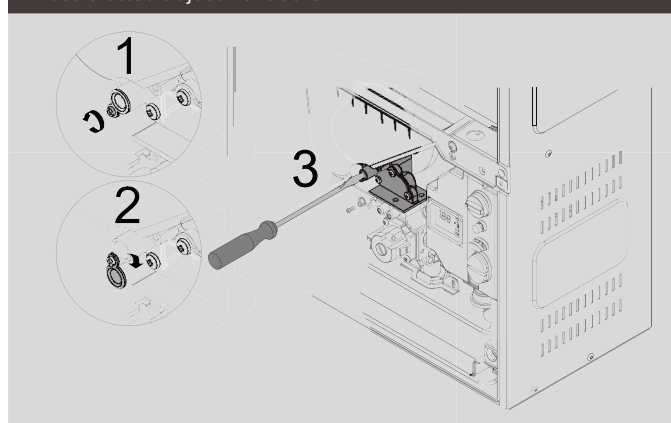
Removing auxiliary cover



4. Remove lower wire harness from control board.

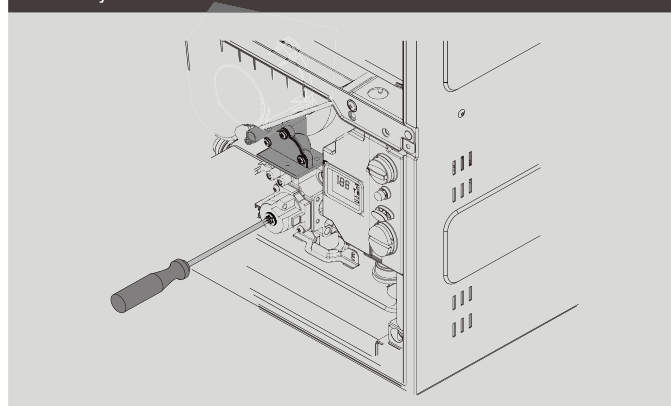
5. Loosen yellow painted Philips screw and cover should rotate down revealing a brass slotted screw.

Brass slotted adjustment screw



6. Remove yellow painted #40 Torx cover from the front of the gas valve revealing a plastic #40 Torx screw.

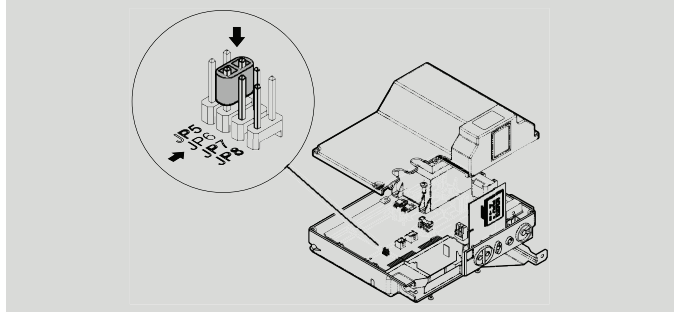
Torx adjustment screw



Converting from propane (LPG) to natural gas (NG)

1. Add jumper to location JP6 on the control board.

Control board jumper NG

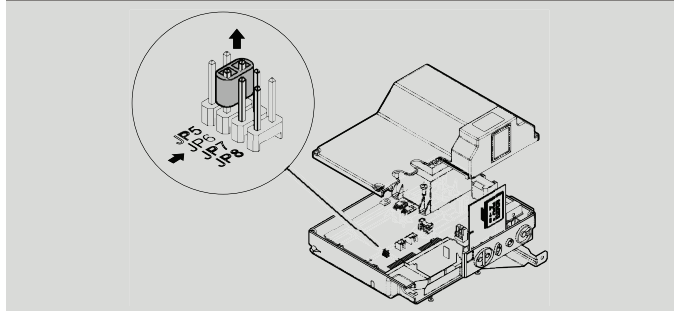


2. Reinstall lower wire harness onto control board.
3. Reinstall control board auxiliary cover.
4. Turn slotted brass screw 3.5 turns counter clockwise.
5. Turn #40 plastic torx screw 1 tooth clockwise.
6. Adjust CO₂ using bulletin TWH-G2-12.

Converting from natural gas (NG) to propane (LPG)

1. Remove jumper from location JP6 on the control board.

Control board jumper LP



2. Reinstall lower wire harness onto control board.
3. Reinstall control board auxiliary cover.
4. Turn slotted brass screw 3.5 turns clockwise.
5. Turn #40 plastic torx screw 1 tooth counter clockwise.
6. Adjust CO₂ using bulletin TWH-G2-12.

Clean up

1. Reinstall yellow painted #40 Torx cover on the front of the gas valve.
2. Rotate brass slotted screw cover up and tighten yellow painted Philips screw.
3. Apply conversion sticker to right side panel above rating plate. Ensure that the information is filled out and accurate.
4. Reinstall cover and return to service.

BBT North America Corporation
Bosch Group

Bosch Water Heating
340 Mad River Park
Waitsfield, VT 05673
Telephone 800-642-3111
Fax (802) 496-6924
techsupport@boschhotwater.com