

### Bosch Home Comfort

## Heat pump innovations 2025

### Future-proof solutions for new and existing buildings

March 2025

- ▶ Compress 5001 AW: All-in-one solution for big tasks in existing apartment buildings; fully integrable into hybrid systems
- ▶ Compress 7801i LW: The first brine-to-water heat pump from Bosch utilizing the natural refrigerant R-290
- ▶ Compress 8800i AW: High-temperature heat pump with especially high efficiency level for existing buildings

Wernau. At ISH 2025, Bosch Home Comfort is presenting three cutting-edge heat pump modes that ideally complement the portfolio. These innovations enable Bosch to address a full spectrum of applications, from new builds to retrofitted properties, including both single-family and multi-family. The new brine heat pump gives Bosch an innovative edge and sets new standards in terms of efficiency and sustainability as it utilizes the new environmentally friendly refrigerant R-290.

#### **Compress 5001 AW – The all-in-one solution for existing apartment buildings**

The Compress 5001 AW air-to-water heat pump is the successor to the proven Compress 5000 AW; with heating outputs of 20 or 40 kilowatts, it is optimized primarily for existing apartment buildings. For larger outputs and construction projects, up to four devices can be cascaded (for a total heating output of 160 kilowatts). High flow temperatures of 70 degrees Celsius at outside temperatures down to -10 degrees Celsius combined with very high efficiency ratings of up to A+++ ensure low operating costs and obviate the need for replacing radiators in renovation projects. Utilizing the natural and environmentally friendly refrigerant R-290, the Compress 5001 AW is ready to meet the requirements of the amended F Gas Regulation. Due to its compact design and low noise level, it is also suitable for installation in densely populated areas. As an all-from-a single-source solution, the air-to-water heat pump is easily integrated into central Bosch heating systems with a system buffer cylinder and the Flow Fresh fresh water

station or into decentralized systems with a Flow 7000/8000 series heat interface unit. It generates comfortable indoor heat and hygienically perfect domestic hot water at all times. Integration into hybrid systems with Bosch peak load boilers as well as into higher-level building management systems via Modbus-TCP/IP or BACnet/IP is carried out using the new Control 8000 system controller, which also enables 24/7 online monitoring and remote maintenance of the heating system via the MEC-Remote portal for trade customers. The Compress 5001 AW will be available as of May 2026.

### **Compress 7801i LW – the first geothermal heat pump utilizing a natural refrigerant**

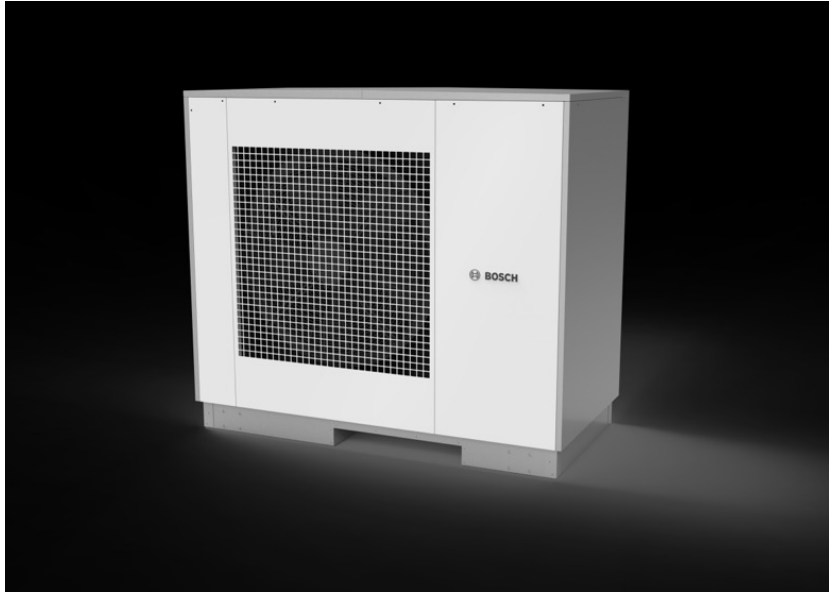
As the first indoor brine-to-water heat pump from Bosch utilizing the natural refrigerant R-290, the Compress 7801i LW combines top performance with environmental protection. Designed for new builds and the modernization of existing single and multi-family homes, this innovative solution sets new standards in efficiency, flexibility and sustainability. Succeeding the Compress 7800i LW, the Compress 7801i LW now also features compressor inverter technology, achieves flow temperatures of up to 80 °C and is available with an integrated stainless steel hot water storage tank (7801i LWM) or without an integrated hot water storage tank (7801i LW). Due to its unique modular design in four output sizes (2-6, 2-8, 3-12 and 4-16 kilowatts), it offers maximum flexibility for installation in two or three parts. The small footprint has been retained from the previous model. All service components are accessible within less than ten minutes for quick service and maintenance. The HMI 800.2 with full-color touchscreen ensures intuitive operation and commissioning. Thanks to its safety concept, the heat pump complies with the IEC 60335-2-40 standard and is suitable for all applications. The Compress 7801i LW will be available in Germany as of Q4 2025.

### **Compress 8800i AW – The efficient powerhouse with three output sizes**

Bosch is adding a powerful high-temperature heat pump with three output sizes up to 15 kW (A-7/W55) to its portfolio: the Compress 8800i AW achieves flow temperatures of up to 70 degrees Celsius even at outside temperature down to -10 degrees Celsius. It utilizes the natural refrigerant R-290 and achieves a particularly high efficiency level for high-temperature systems. Thanks to its performance-optimized refrigerant circuit, the Compress 8800i AW is also extremely efficient in radiator applications (A+++ and ETAs > 150 percent at W55). The space-saving design and the increased output of up to 15 kW make the outdoor unit one of the most compact appliances in its performance class. The high-quality glass design and additional features such as the renovation-optimized plug & play buffer tower and flexible on-the-wall installation make the Compress 8800i AW the ideal choice for existing buildings. Software updates for

the new heat pump generation are easily and quickly installed by trade partners using the EasyService app. The Compress 8800i AW will be available in Germany as of Q4 2025.

Thanks to the new Compress 5001 AW, Compress 7801i LW and Compress 8800i AW, the complete Bosch Home Comfort heat pump portfolio ranging from 3 to 500 kilowatts now utilizes the natural refrigerant R-290.



**Bosch press photo 01:**

With heating outputs of 20 or 40 kilowatts, the Compress 5001 AW air-to-water heat pump is optimized primarily for existing apartment buildings. (Source: Bosch)



**Bosch press photo 02:**

The Compress 7801i LW is the first brine-to-water heat pump from Bosch utilizing the natural refrigerant R-290 (Source: Bosch).

**Bosch press photo 03:**

With its unusually compact volume in this performance class, the Compress 8800i AW sets new standards in performance and efficiency. (Source: Bosch)

**Contact person for press inquiries:**

Patricia Rieth

Phone: +49 7153 306 5491

E-mail: [patricia.rieth@de.bosch.com](mailto:patricia.rieth@de.bosch.com)

*Bosch Home Comfort Group is a leading European manufacturer of sustainable and energy-efficient heating, cooling, home comfort and process heat solutions. In fiscal 2024, the Bosch Home Comfort Group generated sales of 4.4 billion euros and employed approx. 13,800 people. The company has strong international and regional brands and manufactures a diversified product range in Europe, America and Asia.*

*For more information, visit [www.bosch-homecomfortgroup.com](http://www.bosch-homecomfortgroup.com)*

*The Bosch heating and air conditioning brand offers sustainable solutions for heating, cooling and greater comfort and well-being throughout the home. The product portfolio comprises efficient, resource-saving and future-oriented heat pumps, hybrid solutions, solar thermal systems, electric water heaters, air conditioners as well as intelligent energy management systems including home charging solutions for electromobility. The product portfolio is complemented by a comprehensive range of digital tools and services that facilitate the daily work of HVAC professionals. The technical solutions from Bosch cover all requirements of new buildings and modernization projects and are quick and easy to install, simple to maintain and effortless to connect.*

*For maximum comfort and well-being in your own home, Bosch also offers solutions for better air and water quality. These include home ventilation systems, air purifiers and bathroom fans for clean and fresh air, and water softeners for perfect water quality throughout the home. The "Well-being" portfolio of the Bosch heating and air conditioning brand is completed by infrared panels, bathroom radiators, electric heaters and other indoor climate solutions.*

*More information as well as press texts and images are available for download on the website at [www.bosch-homecomfort.com](http://www.bosch-homecomfort.com).*