



# 3-Phase Electric Instantaneous Water Heater

Reliable, Efficient Hot Water Solutions



Tronic 4000



Tronic 7000



Tronic 8500i



HomeCom Easy

Scan to Discover More



# Bosch in every detail

At Bosch Home Comfort, every appliance is thoughtfully designed, expertly manufactured, and rigorously tested to deliver the highest standards of quality, performance, and convenience. We are committed to innovation, sustainability, and creating solutions that redefine home comfort with cutting-edge technology and unmatched efficiency.

## Why choose Bosch?



### Bosch Quality

With over 80 years of engineering excellence, Bosch continues to set the benchmark in quality and innovation. Crafted from premium materials and rigorously tested for endurance, our products deliver reliability, durability, and peace of mind.



### Reliability Guaranteed

Bosch has pioneered hot water solutions for decades, continuously enhancing energy efficiency and functionality. Our commitment is to deliver high-performing, sustainable products that exceed expectations and set new industry standards.



### Sustainability at the Core

Committed to reducing CO<sub>2</sub> emissions and achieving carbon neutrality, Bosch integrates sustainability into every aspect of our operations. Our energy-efficient water heating solutions, including 3-phase electric instantaneous water heaters, reflect our vision for a greener future.



### Maximum convenience

From smart features to compact designs, Bosch hot water solutions are engineered for ease of use – not just for consumers but also for installers. Our innovative designs ensure effortless operation, optimised energy use, and reduced wait times for hot water.



### Expert Local Support

Bosch provides dedicated local service, spare parts availability, and professional training. With our expert support team, customers can expect hassle-free maintenance and long-term peace of mind.







## Contents

<b>About Bosch</b>	<b>2-3</b>
<b>Key Technologies</b>	<b>4-7</b>
ClickFix 2.0 – Easy Installation	4
AquaStop® – Leak Protection	5
Convenient Electrical Connections	5
Internal Components	6
HomeCom Easy App	7
<b>Product Range</b>	<b>8-11</b>
Tronic 4000	08
Tronic 7000	08
Tronic 8500i	09
<b>Warranty &amp; Support</b>	<b>12</b>

## ClickFix 2.0

- Reduces technician workload.
- Ensures consistent, error-free installations.
- Backed by Bosch's trusted engineering excellence.

## Installation made easy



With Bosch's advanced ClickFix 2.0 technology, 3-phase instantaneous water heaters can be installed quickly and effortlessly in just three steps. This applies to both new installations and replacing existing units.

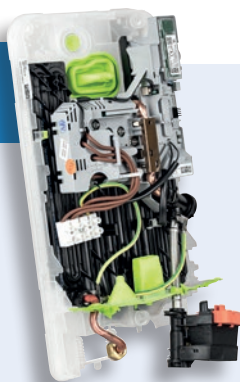
### Step 1



#### Step 1: Effortless mounting of the backplate

The transparent backplate makes it easy to locate drilling holes and allows flexible drilling. Simply fasten the backplate with a central mounting screw, and use the adjustment screws for a perfect fit.

### Step 2



#### Step 2: Room for the cold water connection

Start by inserting the heating block. The flexible cold water inlet and adjustable hot water outlet ensure seamless water connections. Electrical wiring is straightforward.

### Step 3



#### Step 3: Cover on, and you're done

Connect the control unit to the plug connection, attach the device cover, and fasten it with a single screw—and you're done.



## AquaStop® Technology

- Advanced water leak protection for peace of mind.
- Automatically detects and stops leaks at the source.
- Engineered for long-term reliability and durability.

## Lifelong protection against water damage



Automatically shuts off the water when a leak is detected to prevent property damage.

### How the AquaStop® (Float System) Works

#### Step 1

In the event of a leak, water is collected inside the unit and directed into the AquaStop® module, which contains a float system.

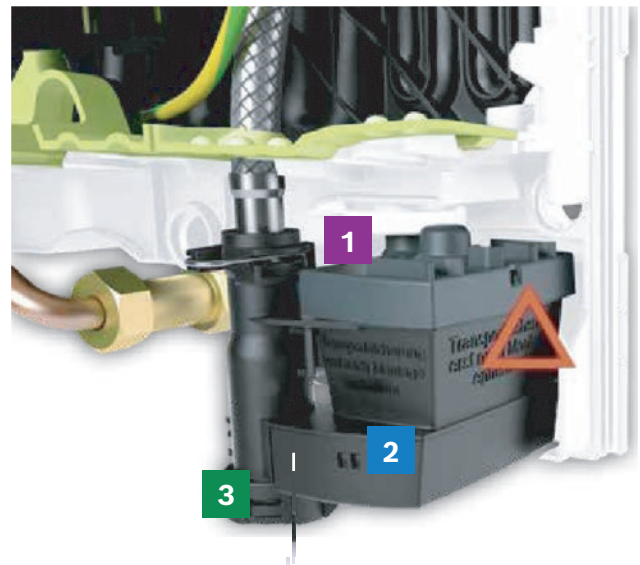
#### Step 2

Once the water reaches a specific level, the AquaStop® mechanism is activated.

#### Step 3

The cold water supply is automatically shut off, effectively preventing water damage.

**IMPORTANT:** Ensure the AquaStop® installation is fully completed before removing the AquaStop® protection device.



With Bosch's **AquaStop®** technology, you can trust in an added layer of protection, ensuring peace of mind and safeguarding your home from unexpected water leaks.

## Convenient electrical connections

The Bosch Tronic series features flexible wiring options, enabling electrical connections from either the top or two lower cable entry points. This design ensures maximum adaptability across various installation environments.

### Versatile Power Options

13 kW, 18 kW and 27 kW models available, offering greater adaptability and ensuring the right solution for various applications.

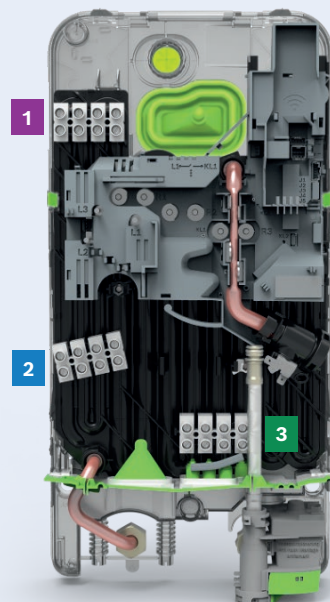
### Electrical Connection Options

**1** Upper connection

**2** Lower connection

**3** Lower connection

For additional details, refer to the installation manual.



## Internal Components

- Faster, hassle-free setup
- Pre-aligned components
- Secure mounting system

## The Bosch difference

Bosch Tronic electric instantaneous water heaters feature a high-performance internal system with bare wire technology for rapid heating, AquaStop® for leak protection, and long-term reliability.

Bosch designs every product with three core properties to ensure superior performance and user satisfaction.

### 1. **Simplicity**

- Intuitive design ensures seamless installation and effortless operation.

### 2. **Quality**

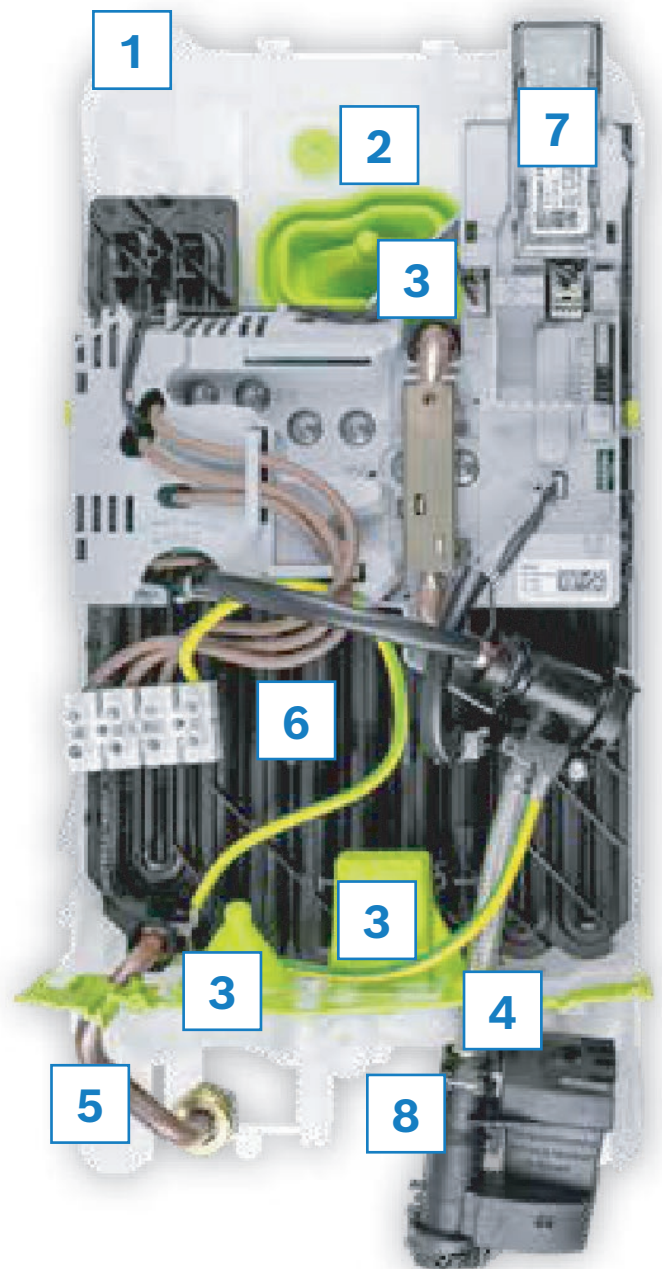
- Precision engineering and durable materials ensure long-lasting performance.

### 3. **Fascination**

- Clever innovation and sleek design create a lasting impression.

## Internal view of the Tronic 8500i device

- 1 Transparent backplate
- 2 Central green knockout for easy drilling
- 3 Optional electrical cable entry points
- 4 Cold water inlet hose
- 5 Hot water outlet
- 6 Heating block
- 7 Wi-Fi gateway
- 8 AquaStop® module



## HomeCom Easy App

- Convenient
- Wi-Fi
- User-Friendly

## Smart Control – Now with Wi-Fi



Stay in control of your Bosch water heater anytime, anywhere. The HomeCom Easy App lets you monitor temperature, track energy use, and optimise performance – all from your smartphone.

### Key Benefits



#### Connect

Connect all your Bosch devices with a single app.



#### Manage

Get a quick and accurate overview of your devices at any time, with an adjustable start



#### Control

Make controlling your heating appliances straightforward with a self-explanatory and clearly structured app interface.



#### Simply Safe

Relax knowing that even in the event of a fault, you'll always know what's going on thanks to automatic fault messages.



#### For Homeowners:

- Temperature control
- Safety temperature limit
- Energy and Water consumption Insights
- Holiday mode

#### For Installers & Service Professionals:

- Real-time performance monitoring
- Sensors reading
- Error code assistance
- Factory Reset

### Pairing with Wi-Fi

#### Step 1

Download the HomeCom Easy App from the App Store or Google Play.

#### Step 2

Scan the QR Code on your device or Wi-Fi dongle.

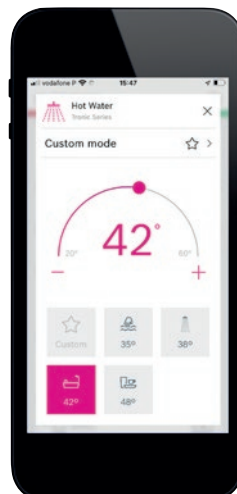
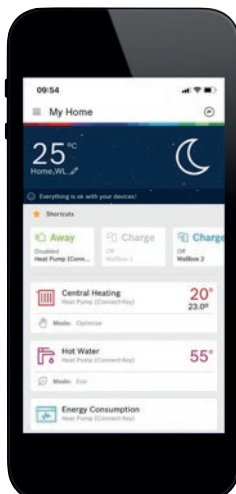
#### Step 3

Follow the on-screen steps to complete setup.

- Start the connection on the water heater (Menu > Wi-Fi > Start Connection)
- Choose between WPS and Hotspot Mode

#### Step 4

Enjoy seamless control of your Bosch water heater.







# Tronic 4000

## Key Features

- Made in Europe for quality and durability
- 50°C limit removes the need for tempering valve
- ClickFix 2.0 for fast installation
- Anti-air bubble protection safeguards heating coil
- LED indicator for operation and error status



Clickfix Easy Installation



Electronic Air Bubble Detection System



Simple Digital LED Indicator



Model		TR4001 L 13 ESOB	TR4001 L 18 ESOB	TR4001 L 27 ESOB
Part number		7736507505	7736507506	7736507507
Temperature settings	°C	Preset 50°C	Preset 50°C	Preset 50°C
Rated output power (400/415V)	kW	13/14	18/19.4	27/27.5
Circuit breaker (400/415V)	A	20/20	25/32	40/40
Switch on flow rate	L/min		2.5	
IP rating			IP25	
HxWxD	mm		484 x 236 x 106	
Weight	Kg		3.3	

# Tronic 7000

## Key Features

- LED display with temperature control & child lock
- Bare-wire heating for fast, efficient performance
- **AquaStop®** safety system detects and stops leaks
- Optional Wi-Fi Gateway Kit for smart monitoring



Clickfix Easy Installation



Electronic Air Bubble Detection System



Digital Multifunctional Display



AquaStop® Water Safety System



Child Lock



Model		TR7001 L 18 DESOAB	TR7001 L 27 DESOAB	TR7001 18 DESOAB	TR7001 27 DESOAB
Part number		7736507508	7736507509	7736507510	7736507511
Temperature settings	°C	Adjustable from 20°C to 50°C	Adjustable from 20°C to 50°C	Adjustable from 20°C to 60°C	Adjustable from 20°C to 60°C
Rated output power (400/415V)	kW	18/19.4	27/27.5	18/19.4	27/27.5
Circuit breaker (400/415V)	A	25/32	40/40	25/32	40/40
Switch on flow rate	L/min		2.5		
IP rating			IP25		
HxWxD	mm		484 x 236 x 106		
Weight	Kg		3.8		



# Tronic 8500i

## Key Features

- 60°C max temperature for multiple outlets
- Built-in Wi-Fi connectivity for smart control
- Multifunctional LED colour display and consumption tracking
- **AquaStop®** safety system detects and stops leaks
- Precise temperature control



Built-in Wi-Fi



Clickfix Easy Installation



Electronic Air Bubble Detection System



Multifunctional Colour Display



AquaStop® Water Safety System



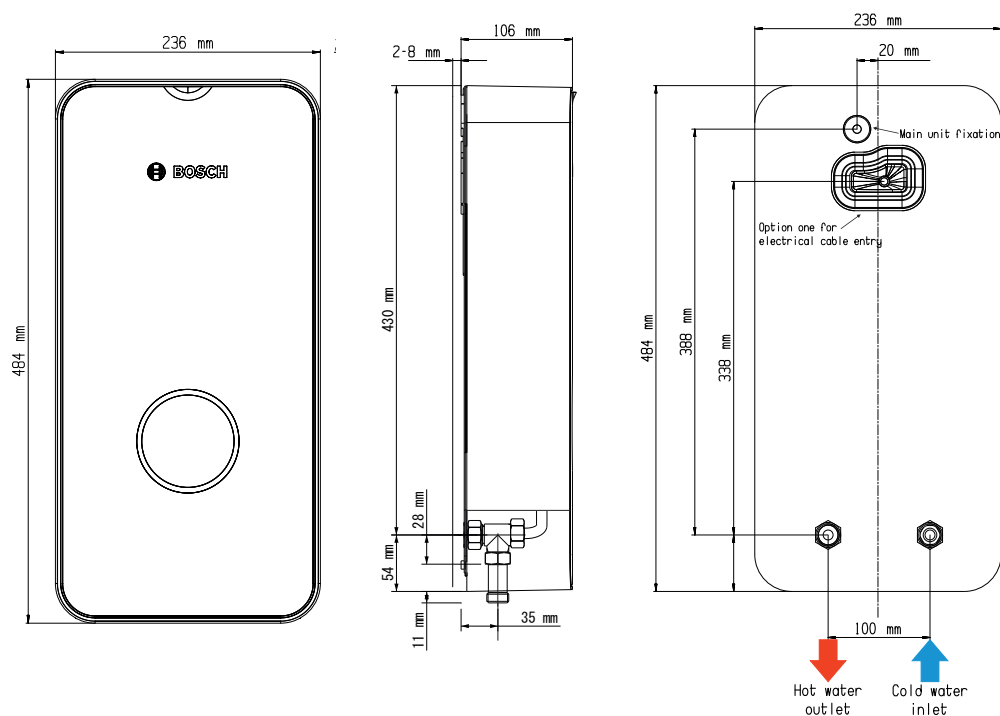
Child Lock



Model		TR8501i 18 DESOAB	TR8501i 27 DESOAB
Part number		7736507512	7736507513
Temperature settings	°C	Adjustable from 20°C to 60°C	Adjustable from 20°C to 60°C
Rated output power (400/415V)	kW	18/19.4	27/27.5
Circuit breaker (400/415V)	A	25/32	40/40
Switch on flow rate	L/min		2.5
IP rating			IP25
HxWxD	mm		484 x 236 x 106
Weight	Kg		3.8

## Tronic Model Drawings

### Applicable to Tronic 4000, 7000, and 8500i



## Compact, reliable, and future-ready

### Instant Hot Water, Maximum Efficiency

As Australian cities grow denser, decentralised hot water solutions provide a compact, energy-efficient alternative to traditional systems. The Bosch Tronic range offers on-demand heating, reducing energy costs and heat loss. With a streamlined design, durable construction, and precise energy tracking, The Bosch Tronic 4000, 7000, and 8500i ensure reliable performance suitable for modern homes, apartments and businesses.

## 3-Phase Electric Instantaneous Water Heater



Product Type	Unit	TR4001 L 13 ESOB	TR4001 L 18 ESOB	TR4001 L 27 ESOB
Part Number		7736507505	7736507506	7736507507
Rated output	V	400/415	400/415	400/415
Rated Power (400/415V)	kW	13/14	18/19.4	27/27.5
Rated current (400/415V)	A	18.8/19.5	26/27	39/39.7
Circuit breaker (400/415V)	A	20/20	25/32	40/40
Temperature settings		Preset 50°C	Preset 50°C	Preset 50°C
Maximum allowable infeed temperature	°C	50°C	50°C	50°C
Power line type		3 phases + earth without neutral		
Minimum start-up flow		2.5 l/min		
Minimum start-up pressure		0.04 Mpa (0.4 bar)		
Dimensions	mm	483 x 236 x 106mm		
Electronically controlled		✓	✓	✓
Setting desired temperature		X	X	X
Installation technology CLICKFIX 2.0		✓	✓	✓
Touchscreen operation		X	X	X
AquaStop®		X	X	X
Wi-Fi Connect		X	X	X
Flexible connections		✓	✓	✓
Electronic air bubble detection		✓	✓	✓
AS3498 5°C offset feature		✓	✓	✓



TR7001 L 18 DESOAB	TR7001 L 27 DESOAB	TR7001 18 DESOAB	TR7001 27 DESOAB	TR8501i 18 DESOAB	TR8501i 27 DESOAB
7736507508	7736507509	7736507510	7736507511	7736507512	7736507513
400/415	400/415	400/415	400/415	400/415	400/415
18/19.4	27/27.5	18/19.4	27/27.5	18/19.4	27/27.5
26/27	39/39.7	26/27	39/39.7	26/27	39/39.7
25/32	40/40	25/32	40/40	25/32	40/40
Adjustable from 20°C to 50°C	Adjustable from 20°C to 50°C	Adjustable from 20°C to 60°C	Adjustable from 20°C to 60°C	Adjustable from 20°C to 60°C	Adjustable from 20°C to 60°C
50°C	50°C	55°C	55°C	55°C	55°C
3 phases + earth without neutral					
2.5 l/ min					
0.04 Mpa (0.4 bar)					
483 x 236 x 106mm					
✓	✓	✓	✓	✓	✓
✓	✓	✓	✓	✓	✓
✓	✓	✓	✓	✓	✓
✓	✓	✓	✓	✓	✓
✓	✓	✓	✓	✓	✓
Optional Gateway Kit as an accessory	Optional Gateway Kit as an accessory	Optional Gateway Kit as an accessory	Optional Gateway Kit as an accessory	✓	✓
✓	✓	✓	✓	✓	✓
✓	✓	✓	✓	✓	✓
✓	✓	X	X	X	X



# Connect with us



## Visit Our Website

Bosch Website

[bosch-homecomfort.com.au](https://bosch-homecomfort.com.au)

Video support on Bosch YouTube

[youtube.com/@BoschHomeComfortANZ](https://youtube.com/@BoschHomeComfortANZ)



## Email Us

Sales Orders

[HotWater.Sales@au.bosch.com](mailto:HotWater.Sales@au.bosch.com)

General Information

[HotWater.Query@au.bosch.com](mailto:HotWater.Query@au.bosch.com)

Marketing

[Hot.Water@au.bosch.com](mailto:Hot.Water@au.bosch.com)

Warranty & Service

[HotWater.Warranty@au.bosch.com](mailto:HotWater.Warranty@au.bosch.com)



## Alternatively, speak with our helpful team

1300 30 70 37

Monday to Friday, 8am to 6pm (Melbourne Time).

We are closed on all national public holidays and are open with reduced hours for state based public holidays.

## Warranty & Service Information

### Warranty

**Bosch Tronic 3-Phase Electric Instantaneous Water Heaters** are backed by a **comprehensive warranty** to ensure quality and reliability.

#### **Tronic 4000, Tronic 7000, and Tronic 8500i:**

- 5-year parts and labour warranty (residential use).
- 1-year parts and labour warranty (commercial use).

For full details on the **Bosch Warranty Statement**, please visit: [www.bosch-homecomfort.com/au/en/residential/customer-support/warranty-and-servicing](https://www.bosch-homecomfort.com/au/en/residential/customer-support/warranty-and-servicing) or call **1300 30 70 37**.

### Important note for Australian Consumers

Our products come with guarantees that cannot be excluded under Australian Consumer Law.

In case of a major failure, you are entitled to a replacement or refund as per Australian Consumer Law. You are entitled to **repair or replacement** if the goods are not of acceptable quality, and the failure does **not amount to a major failure**.

Compensation is available for any other reasonably foreseeable loss or damage.

Bosch provides a **nationwide network of service agents and support staff** across Australia to assist with any queries.

### Servicing

For service inquiries or to find your **nearest Bosch service agent**, contact our **Customer Contact Centre** at **1300 30 70 37**.



Model numbers and specifications are for reference only and subject to change without prior notice.

Whilst every care has been taken in the preparation of this publication, Bosch does not warrant the accuracy or completeness of the information in this publication and Bosch reserves the right to alter specifications without notice. To the extent permitted by law, Bosch excludes all liability, including negligence, for any loss incurred in reliance on the contents of this publication

KRD 03/2025 – RB 4950 HC

**Bosch Home Comfort Group Australia**  
1555 Centre Road Clayton VIC 3168

**Postal Address**  
Locked Bag 66, Clayton South VIC 3169

**Customer Line**  
Phone: 1300 30 70 37

[bosch-homecomfort.com.au](https://bosch-homecomfort.com.au)