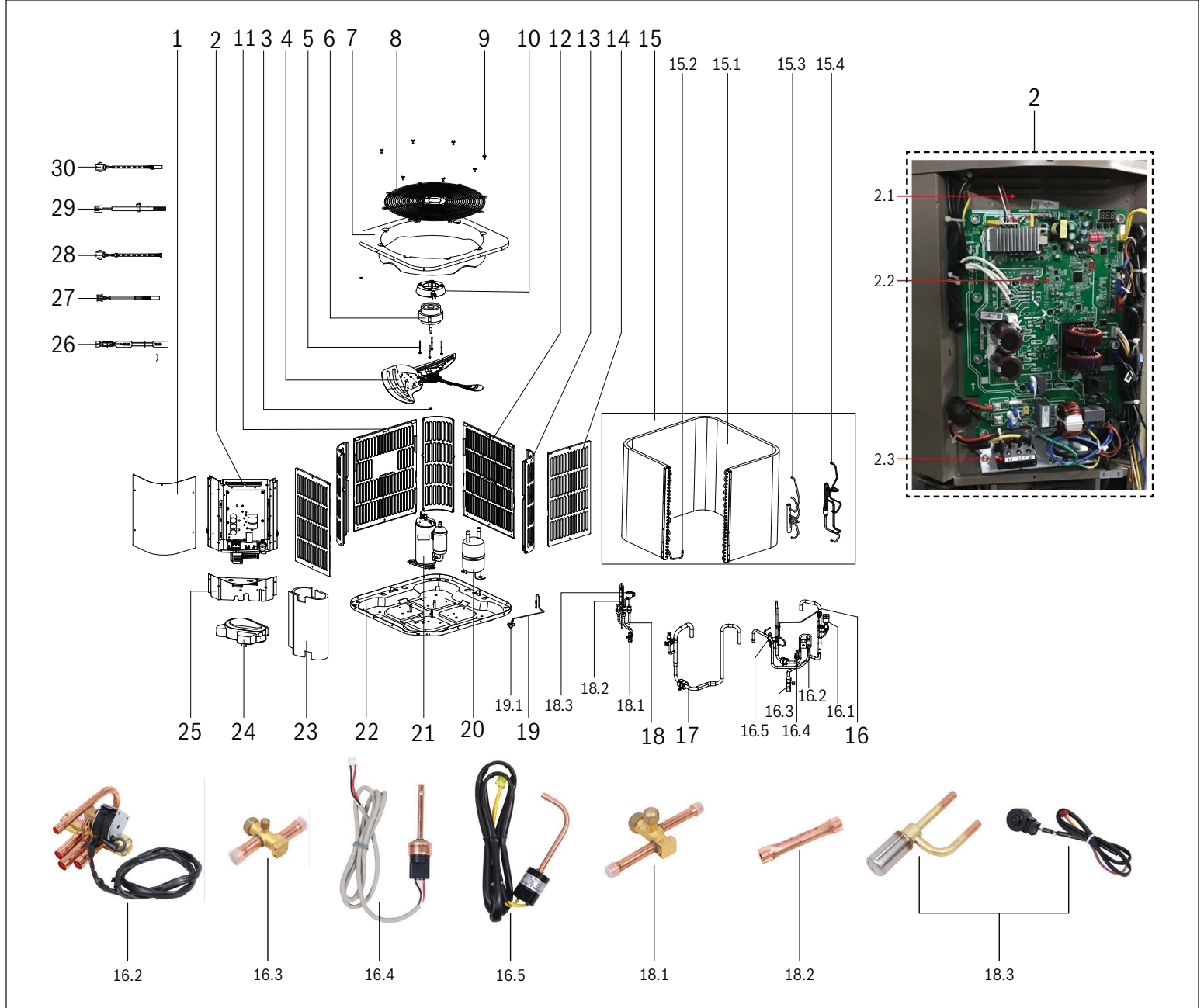


# Bosch IDS BOVA15-24, BOVA15-36, & BOVA15-60 Split System Heat Pump

## 2 Ton Capacity

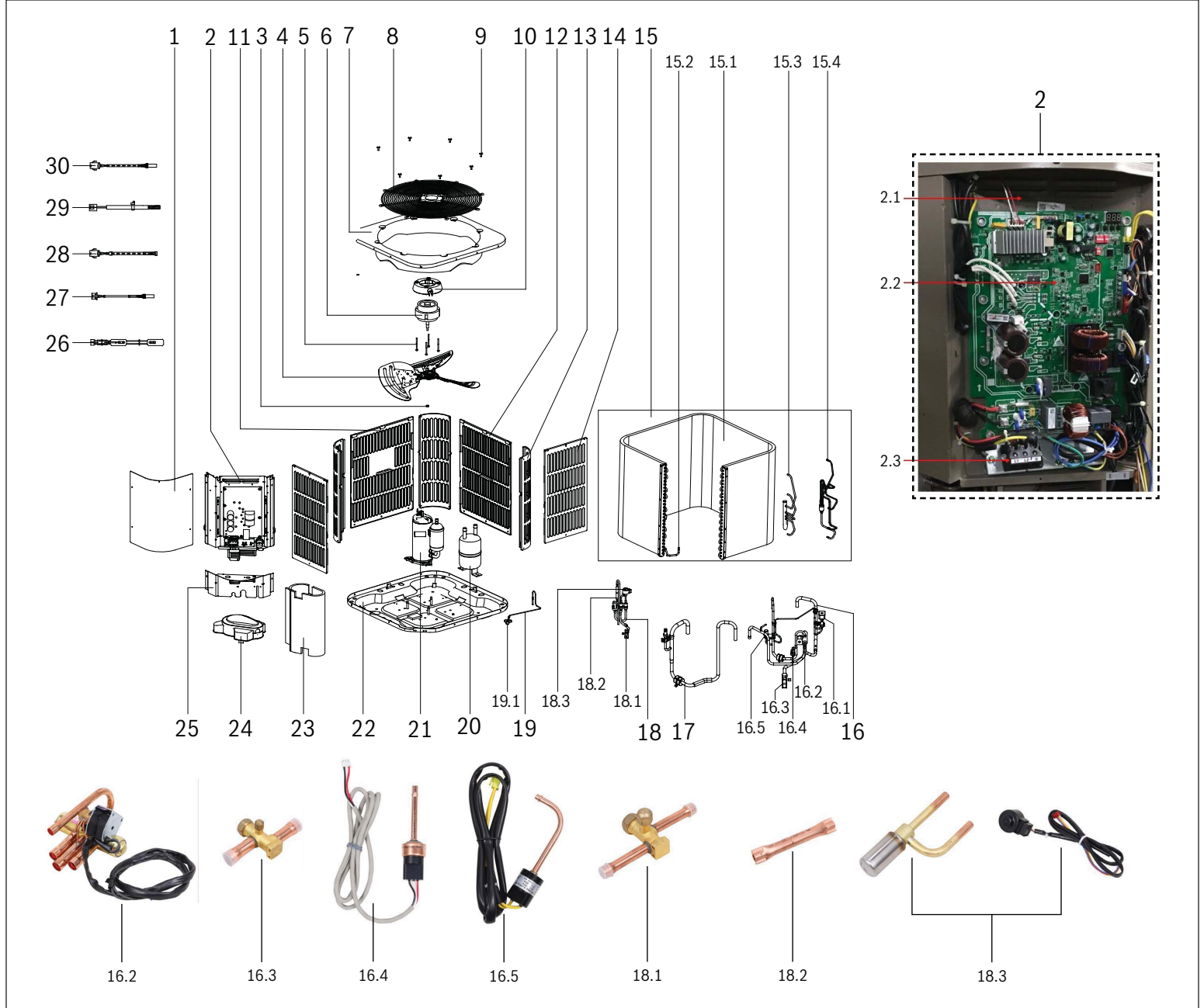


Pos.	Description	Qty	Ordering no.	BOVA15-24 (2 Ton)	Recommended Stock	Remarks
1	Service Access Panel	1.0	8733956888	■		
2	Control Board Assembly	1.0	8733956889	■		
2.1	Control Board Mounting Panel	1.0	8733956890	■		
2.2	Outdoor Control Board	1.0	8733956891	■	✓	
2.3	High Voltage Terminal Block	1.0	8733953148	■		
3	Nuts for outdoor fan	1.0	8733941801	■		
4	Fan Blade	1.0	8733941802	■	✓	
5	Motor Mounted Bolt	4.0	8733941845	■		
6	Outdoor ECM Motor	1.0	8733956892	■	✓	
7	Top Cover Assembly	1.0	8733956893	■		
8	Top Cover Grate	1.0	8733956894	■		
9	Top Cover Grate Bolts	4.0	8733956895	■		
10	Motor Installation Board Ass'y	1.0	8733941847	■		
11	Side Coil Guard (with Bosch logo)	1.0	8733956962	■		
12	Side Louver Panel 1	2.0	8733956896	■		
13	Round Louver Panel	3.0	8733953152	■		
14	Side Louver Panel 2	2.0	8733956897	■		
15	Condenser Coil Assembly	1.0	8733956898	■		
15.1	Condenser Coil	1.0	8733956899	■		
15.2	Condenser Transition Pipe	1.0	8733941814	■		
15.3	Condenser Input Assembly	1.0	8733956900	■		
15.4	Condenser Output Assembly	1.0	8733956901	■		
16	Reversing Valve System Assembly	1.0	8733956902	■	✓	
16.1	Pressure Equalizer Valve (PEV)	1.0	8733953158	■	✓	
16.2	Reversing Valve	1.0	8733941816	■	✓	
16.3	Suction Valve	1.0	8733941819	■	✓	
16.4	Pressure Transducer	1.0	8733953160	■	✓	
16.5	High Pressure Switch	1.0	8733941857	■	✓	
17	Suction Pipe Assembly	1.0	8733956903	■		
18	High Pressure Valve Assembly	1.0	8733953162	■	✓	
18.1	Liquid Valve	1.0	8733941822	■	✓	
18.2	Check Valve	1.0	8733941823	■		
18.3	EEV Assembly	1.0	8733955398	■	✓	
19	Gauge Port Assembly	1.0	8733941826	■		
19.1	Gauge Port	1.0	8733941827	■		
20	Accumulator	1.0	8733941828	■		
21	DC Inverter Compressor	1.0	8733953165	■	✓	
22	Base Pan	1.0	8733956905	■		
23	Compressor Insulation	1.0	8733956906	■		
24	Compressor Rubber Cap	1.0	8733956907	■		
25	Service Port Access Panel	1.0	8733956908	■		
26	Crankcase Heater	1.0	8733941834	■		
27	Liquid Line Temperature Sensor (T3L)	1	8733956909	■	✓	
28	Compressor Discharge Temperature Sensor (T5)	1	8733956910	■	✓	
29	Outdoor Coil Temperature Sensor (T3)	1	8733953173	■	✓	
30	Ambient Temperature Sensor (T4)	1	8733956911	■	✓	

**Bosch BOVA 15  
BOVA-24HDN1-M15G Split System Heat Pump  
2 Ton Capacity**

# Bosch IDS BOVA15-24, BOVA15-36, & BOVA15-60 Split System Heat Pump

## 3 Ton Capacity

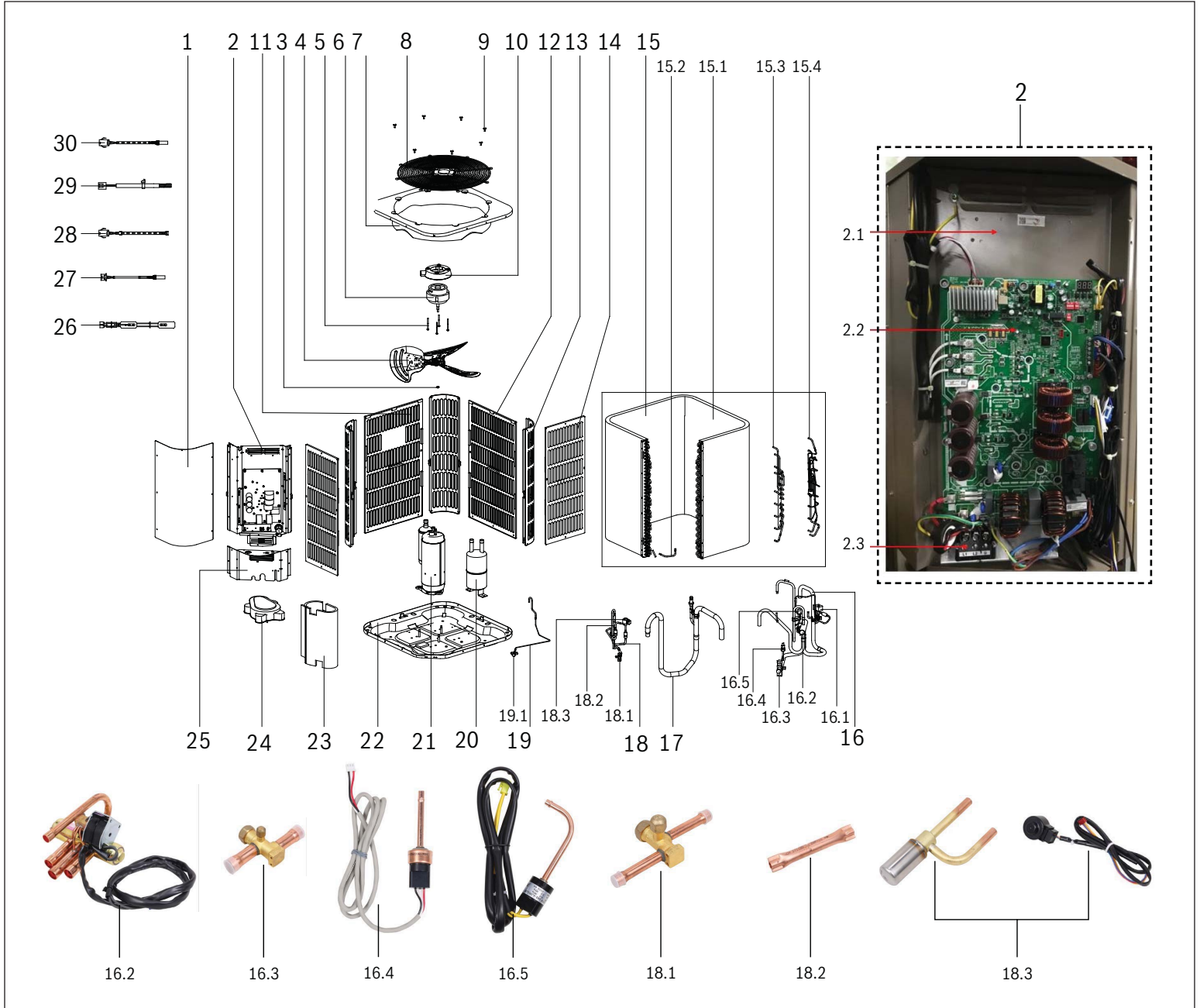


Pos.	Description	Qty	Ordering no.	BOVA15-36 (3 Ton)	Recommended Stock	Remarks
1	Service Access Panel	1.0	8733956888	■		
2	Control Board Assembly	1.0	8733956889	■		
2.1	Control Board Mounting Panel	1.0	8733956890	■		
2.2	Outdoor Control Board	1.0	8733956891	■	✓	
2.3	High Voltage Terminal Block	1.0	8733953148	■		
3	Nuts for outdoor fan	1.0	8733941801	■		
4	Fan Blade	1.0	8733941802	■	✓	
5	Motor Mounted Bolt	4.0	8733941845	■		
6	Outdoor ECM Motor	1.0	8733956892	■	✓	
7	Top Cover Assembly	1.0	8733956893	■		
8	Top Cover Grate	1.0	8733956894	■		
9	Top Cover Grate Bolts	4.0	8733956895	■		
10	Motor Installation Board Ass'y	1.0	8733941847	■		
11	Side Coil Guard (with Bosch logo)	1.0	8733956962	■		
12	Side Louver Panel 1	2.0	8733956896	■		
13	Round Louver Panel	3.0	8733953152	■		
14	Side Louver Panel 2	2.0	8733956897	■		
15	Condenser Coil Assembly	1.0	8733956946	■		
15.1	Condenser Coil	1.0	8733956948	■		
15.2	Condenser Transition Pipe	1.0	8733941814	■		
15.3	Condenser Input Assembly	1.0	8733956949	■		
15.4	Condenser Output Assembly	1.0	8733956950	■		
16	Reversing Valve System Assembly	1.0	8733956902	■	✓	
16.1	Pressure Equalizer Valve (PEV)	1.0	8733953158	■	✓	
16.2	Reversing Valve	1.0	8733941816	■	✓	
16.3	Suction Valve	1.0	8733941819	■	✓	
16.4	Pressure Transducer	1.0	8733953160	■	✓	
16.5	High Pressure Switch	1.0	8733941857	■	✓	
17	Suction Pipe Assembly	1.0	8733956903	■		
18	High Pressure Valve Assembly	1.0	8733953162	■	✓	
18.1	Liquid Valve	1.0	8733941822	■	✓	
18.2	Check Valve	1.0	8733941823	■		
18.3	EEV Assembly	1.0	8733953398	■	✓	
19	Gauge Port Assembly	1.0	8733941826	■		
19.1	Gauge Port	1.0	8733941827	■		
20	Accumulator	1.0	8733941828	■		
21	DC Inverter Compressor	1.0	8733953165	■	✓	
22	Base Pan	1.0	8733956905	■		
23	Compressor Insulation	1.0	8733956906	■		
24	Compressor Rubber Cap	1.0	8733956907	■		
25	Service Port Access Panel	1.0	8733956908	■		
26	Crankcase Heater	1.0	8733941834	■		
27	Liquid Line Temperature Sensor (T3L)	1	8733956909	■	✓	
28	Compressor Discharge Temperature Sensor (T5)	1	8733956910	■	✓	
29	Outdoor Coil Temperature Sensor (T3)	1	8733953173	■	✓	
30	Ambient Temperature Sensor (T4)	1	8733956911	■	✓	

**Bosch BOVA 15  
BOVA-36HDN1-M15G Split System Heat Pump  
3 Ton Capacity**

# Bosch IDS BOVA15-24, BOVA15-36, & BOVA15-60 Split System Heat Pump

## 5 Ton Capacity



Pos.	Description	Qty	Ordering no.	BOVA15-60 (5 Ton)	Recommended Stock	Remarks
1	Service Access Panel	1.0	8733953175	■		
2	Control Board Assembly	1.0	8733956912	■		
2.1	Control Board Mounting Panel	1.0	8733956913	■		
2.2	Outdoor Control Board	1.0	8733956914	■	✓	
2.3	High Voltage Terminal Block	1.0	8733953148	■		
3	Nuts for outdoor fan	1.0	8733941801	■		
4	Fan blade	1.0	8733953178	■	✓	
5	Motor Mounted Bolt	4.0	8733941845	■		
6	Outdoor ECM Motor	1.0	8733956892	■	✓	
7	Top Cover Assembly	1.0	8733956915	■		
8	Top Cover Grate	1.0	8733956916	■		
9	Top Cover Grate Bolts	4.0	8733941806	■		
10	Motor Installation Board Ass'y	1.0	8733941847	■	✓	
11	Side Coil Guard (with Bosch logo)	1.0	8733956963	■		
12	Side Louver Panel 1	2.0	8733956917	■		
13	Round Louver Panel	3.0	8733953180	■		
14	Side Louver Panel 2	2.0	8733956918	■		
15	Condenser Coil Assembly	1.0	8733956919	■		
15.1	Condenser Coil	1.0	8733956920			
15.2	Condenser Transition Pipe	1.0	8733941814	■		
15.3	Condenser Input Assembly	1.0	8733956921	■		
15.4	Condenser Output Assembly	1.0	8733956922	■		
16	Reversing Valve System Assembly	1.0	8733956923	■	✓	
16.1	Pressure Equalizer Valve (PEV)	1.0	8733953158	■	✓	
16.2	Reversing Valve	1.0	8733953159	■	✓	
16.3	Suction Valve	1.0	8733941858	■	✓	
16.4	Pressure transducer	1.0	8733953160	■	✓	
16.5	High pressure switch	1.0	8733941857	■	✓	
17	Suction pipe assembly	1.0	8733956924	■		
18	High Pressure Valve Assembly	1.0	8733941860	■	✓	
18.1	Liquid Valve	1.0	8733941822	■	✓	
18.2	Check Valve	1.0	8733941823	■		
18.3	EEV Assembly	1.0	8733953189	■	✓	
19	Gauge Port Assembly	1.0	8733955406	■		
19.1	Gauge Port	1.0	8733941827	■		
<b>Bosch BOVA 15 BOVA-60HDN1-M15G Split System Heat Pump 5 Ton Capacity</b>						

