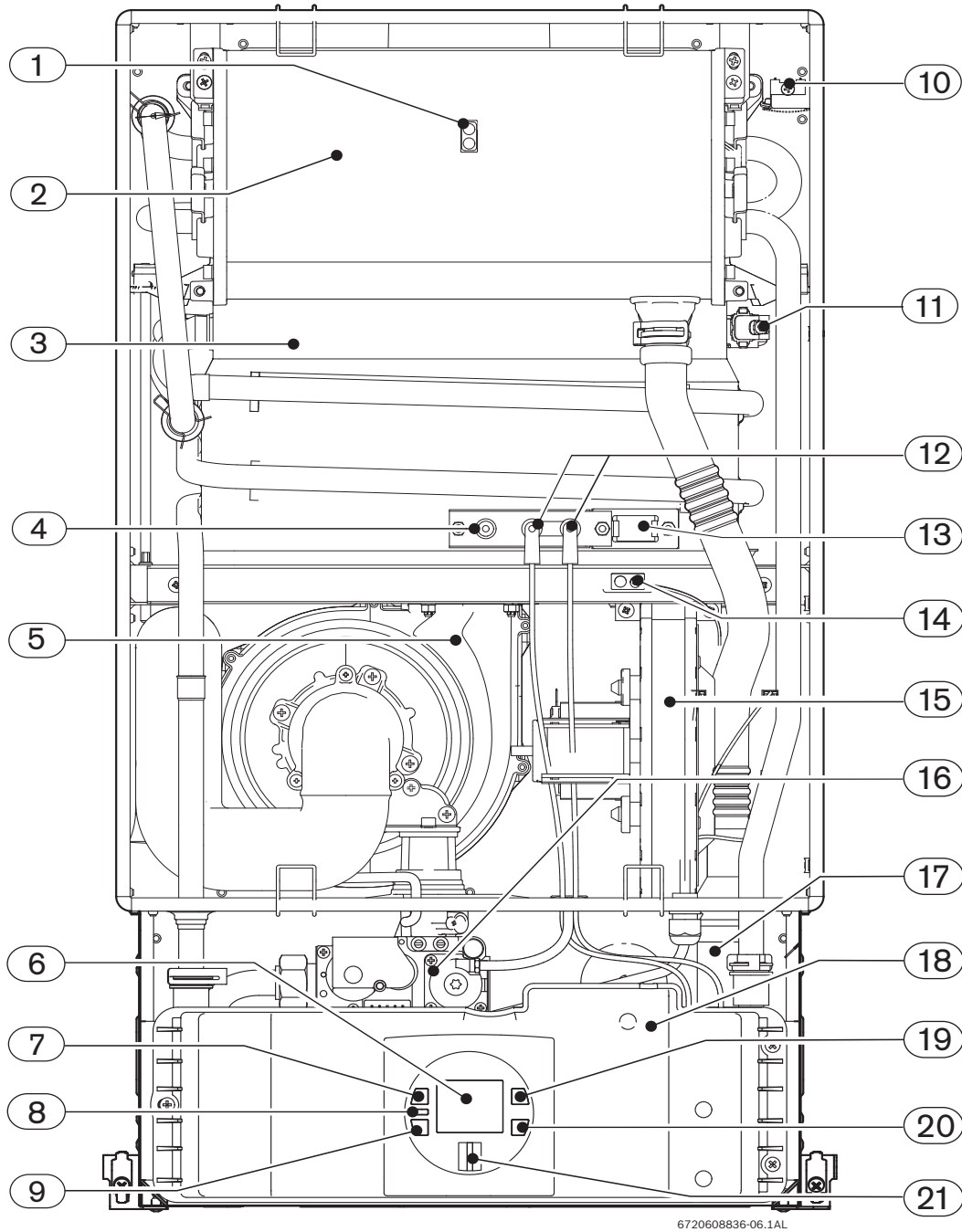


12 Interior components diagram and parts list

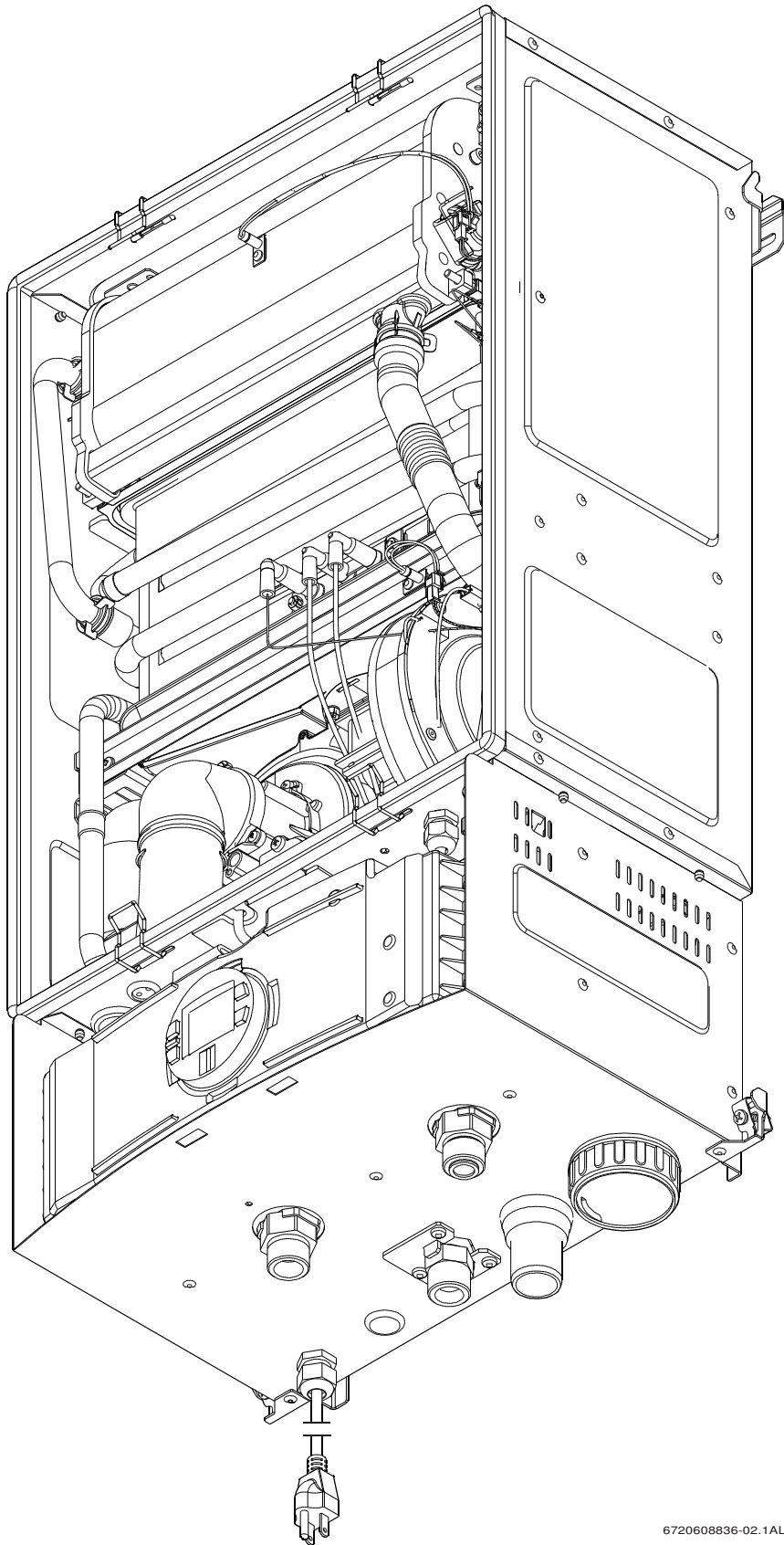
12.1 Interior components



6720608836-06.1AL

Fig. 77 Components

- | | | | |
|----|--------------------------------------|----|-----------------------------|
| 1 | Exhaust temperature sensor | 13 | Observation window |
| 2 | Condensing heat exchanger | 14 | Backflow temperature sensor |
| 3 | Heat exchanger | 15 | Secondary air fan |
| 4 | Ionization sensor | 16 | Gas valve |
| 5 | Primary fan (Mixer) | 17 | Condensate trap |
| 6 | LCD display | 18 | Control unit |
| 7 | On/Off button | 19 | Up button |
| 8 | Reset button | 20 | Down button |
| 9 | Program button | 21 | LED |
| 10 | Flue gas limiter | | |
| 11 | Heat exchanger overheat sensor (ECO) | | |
| 12 | Ignition electrodes | | |

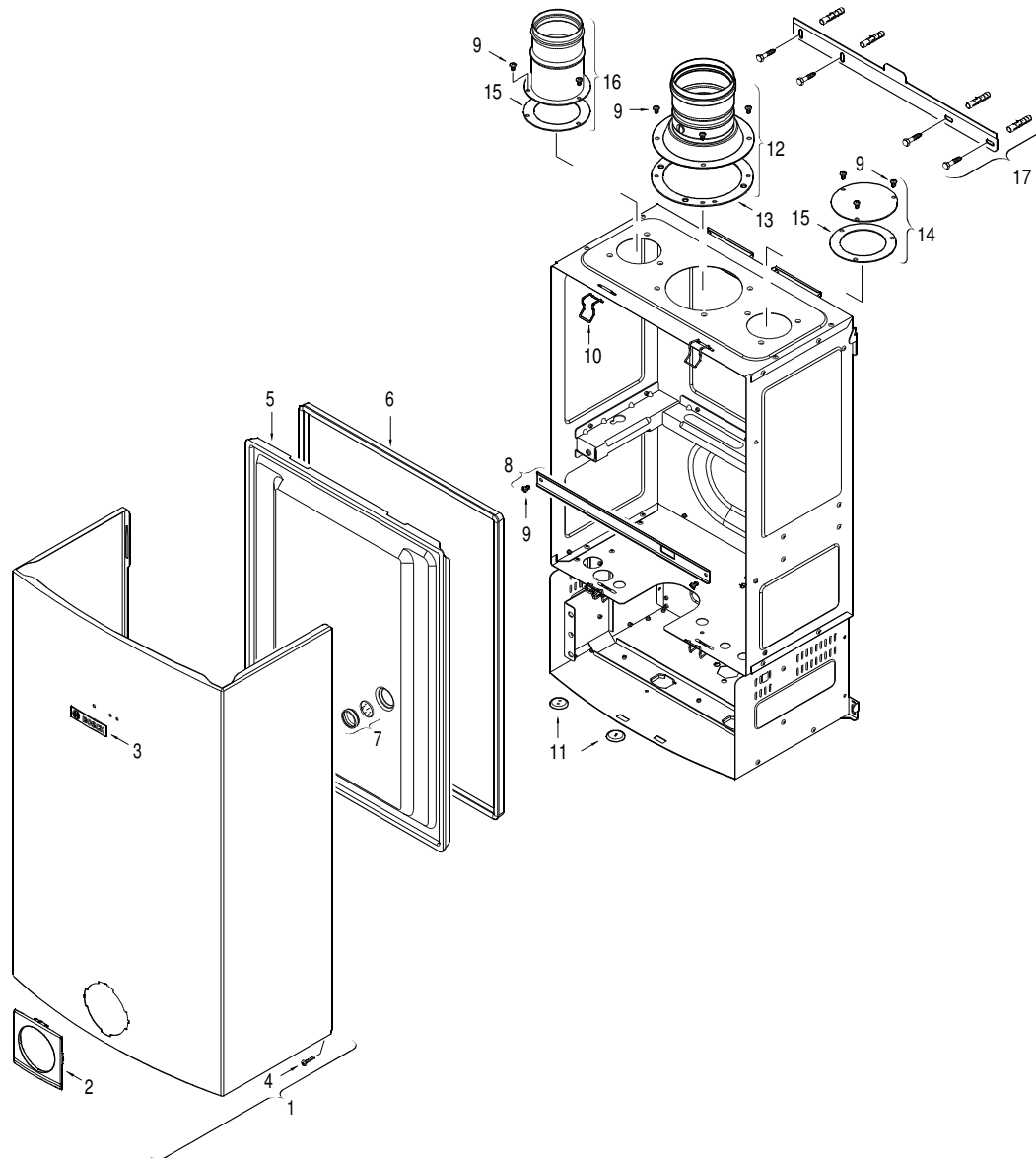


6720608836-02.1AL

Fig. 78 Appliance overview

12.2 Components diagram

12.2.1 Group 1



6720902973.AB JF

Fig. 79 Components Diagram

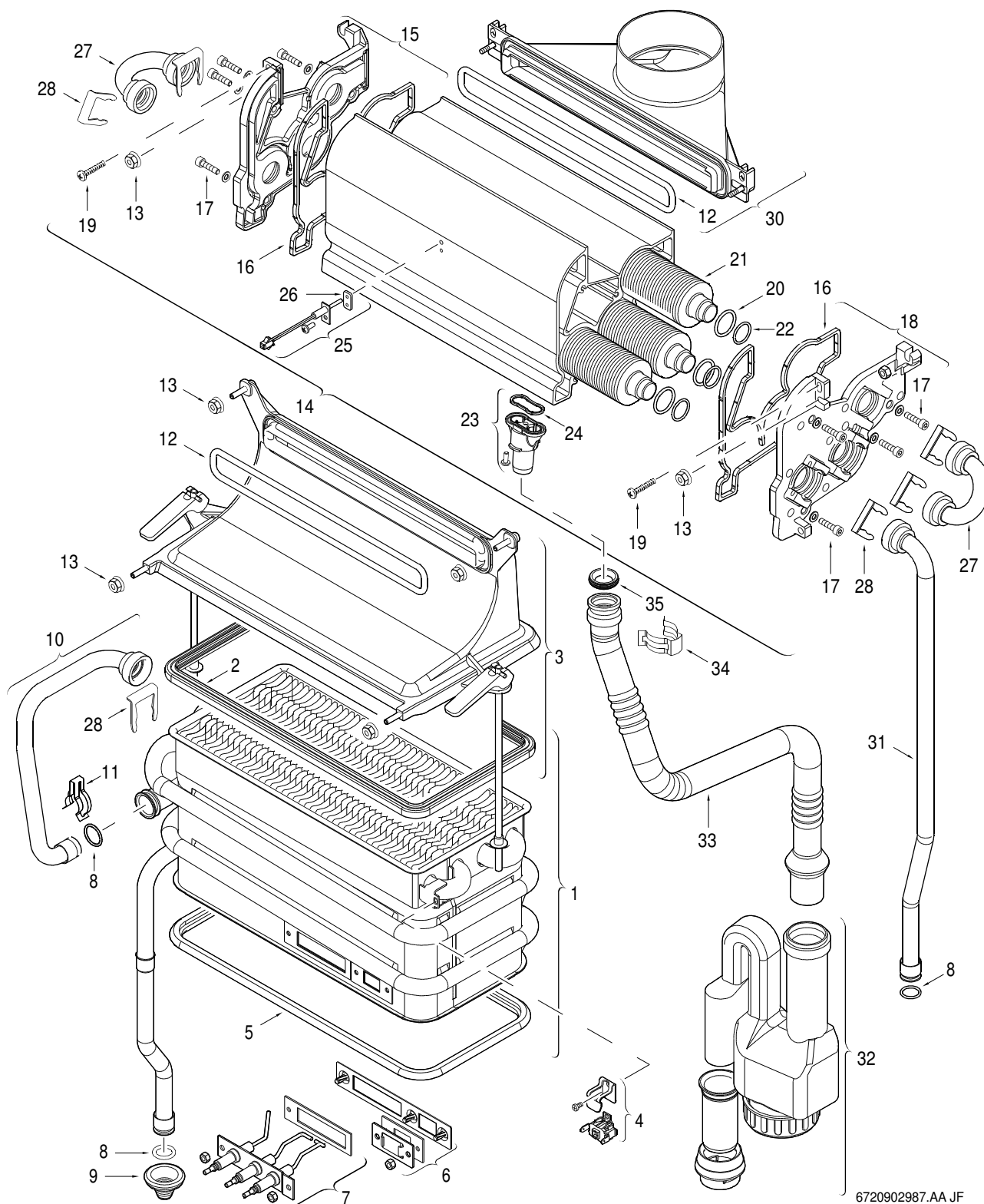
Item	Description	Reference
1	Front cover	8 705 431 412
2	Cover shield	8 705 506 906
3	Trade mark badge	8 701 103 140
4	Cover screw	8 703 401 170
5	Combustion cover	8 700 506 300
6	Combustion cover gasket	8 704 701 084
7	Observation window	8 705 600 003
8	Holding bracket	8 708 104 103
9	Screw	8 703 403 012

Table 30

Item	Description	Reference
10	Combustion cover clip	8 701 201 032
11	Grommet set	8 710 203 039
12	Exhaust accessory	8 705 504 152
13	Gasket exhaust	8 700 103 710
14	Inlet air cover	8 708 006 022
15	Inlet air gasket	8 700 103 166
16	Inlet air accessory	8 705 504 154
17	Mounting bracket	8 701 309 164

Table 30

12.2.2 Group 2



6720902987.AA JF

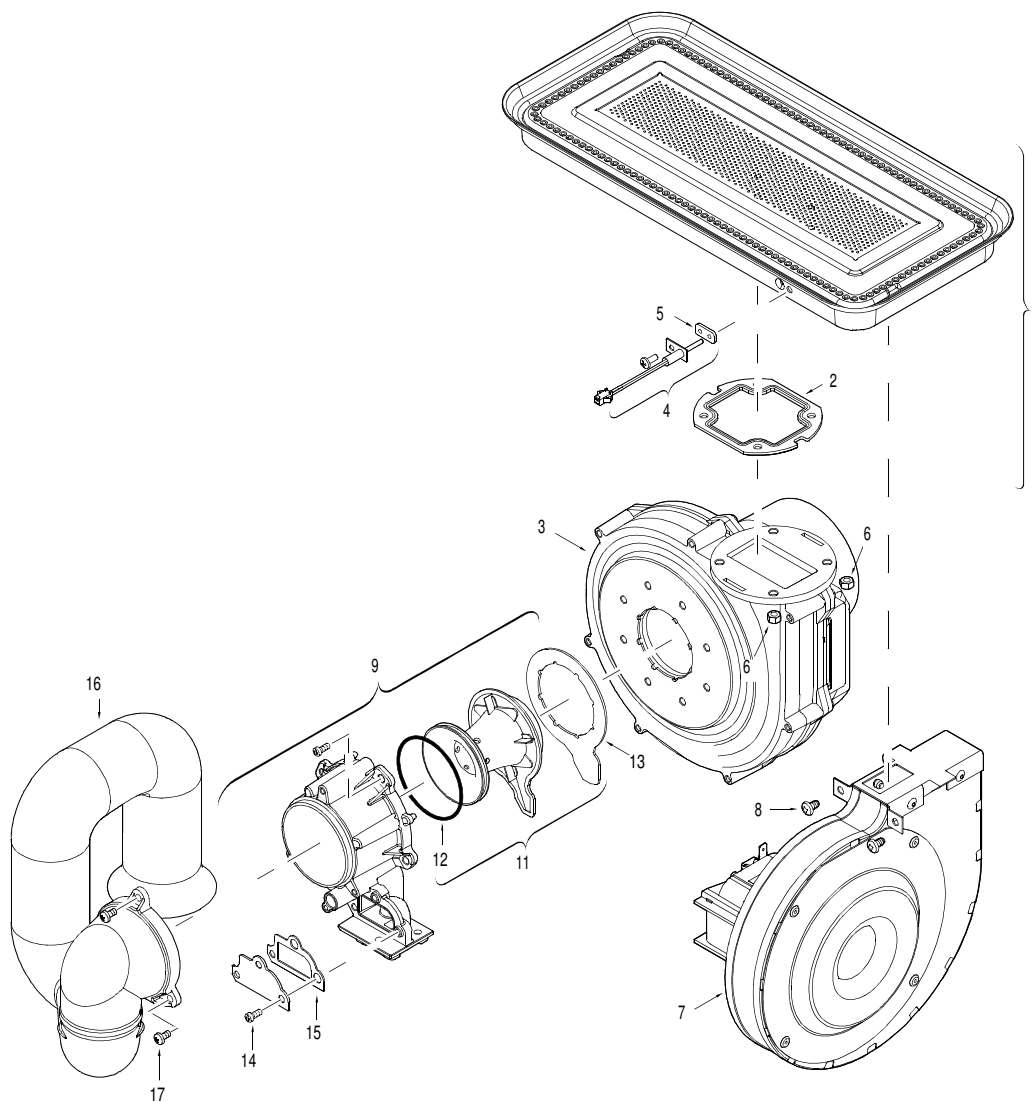
Fig. 80 Components Diagram

Interior components diagram and parts list

Item	Description	Reference
1	Heat exchanger	8 705 406 419
2	Heat exchanger top gasket	8 704 701 052
3	Condensing exchanger inlet	8 705 700 159
4	Overheat sensor (ECO)	8 707 206 204
5	Heat exchanger bottom gasket	8 704 701 054
6	Site window	8 701 000 401
7	Ignition group	8 701 302 249
8	Heat exchanger O-ring	8 700 205 147
9	Rubber grommet	8 710 303 027
10	Connecting pipe	8 700 715 497
11	Pipe connection clip	8 701 201 028
12	Condensing exchanger gasket	8 704 701 090
13	Condensing exchanger nut	8 703 301 157
14	Condensing heat exchanger	8 705 700 188
15	Condensing exchanger left side	8 705 700 186
16	Condensing exchanger side gasket	8 704 701 091
17	Allen screw	2 918 060 162
18	Condensing exchanger right side	8 705 700 187
19	Screw	2 910 611 496
20	Fincoil O-ring	8 700 205 226
21	Condensing fincoil	8 700 715 402
22	O-ring	8 700 205 228
23	Condensate drain connector	8 705 506 838
24	Condensate drain connector gasket	8 704 701 092
25	Exhaust temperature sensor	8 707 206 459
26	Washer	8 704 701 097
27	U-bend pipe	8 703 305 352
28	Condensing exchanger clip	8 701 300 023
30	Flue gas collector	8 705 506 841
31	Cold water pipe upper	8 700 715 436
32	Siphon	8 705 202 141
33	Condensate drain pipe	8 700 703 177
34	Condensate drain pipe clip	8 716 102 607
35	Condensate drain pipe O-ring	8 704 701 094

Table 31

12.2.3 Group 3



6720902988.AA.JF

Fig. 81 Components Diagram

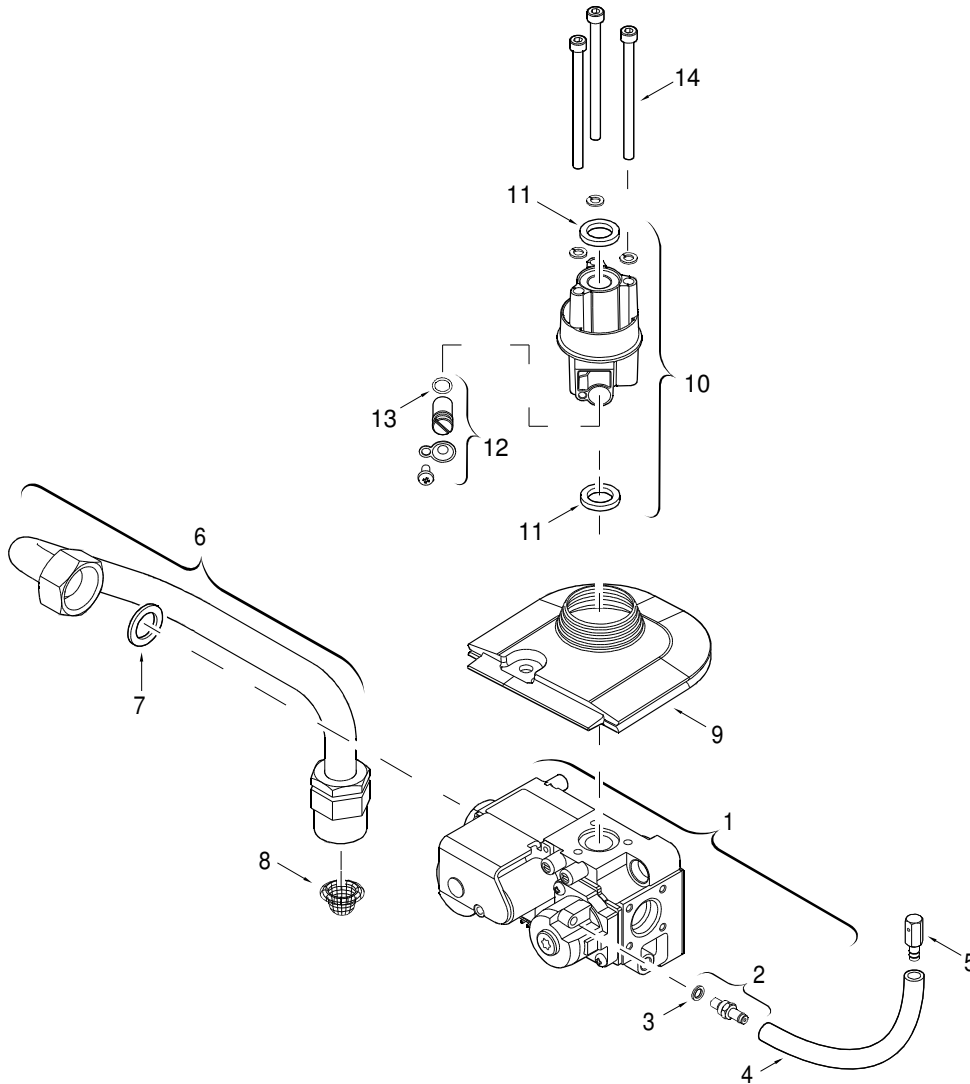
Item	Description	Reference
1	Main burner - NG	8 708 120 650
1	Main burner - LPG	8 708 120 673
2	Burner gasket	8 704 701 087
3	Primary fan	8 707 204 081
4	Backflow temperature sensor	8 707 206 459
5	Washer	8 704 701 097
6	Fan mount nut	2 915 011 006
7	Secondary fan	8 707 204 082
8	Screw	8 703 403 012

Table 32

Item	Description	Reference
9	Gas / Air Mixer	8 705 700 170
11	Venturi	8 700 306 226
12	O-ring	8 700 205 224
13	Mixer / Fan gasket	8 704 701 059
14	Screw	2 910 642 150
15	Plate gasket	8 701 004 049
16	Air supply duct	8 705 700 155
17	Screw	2 910 952 122

Table 32

12.2.4 Group 4



6720902990.AA JF

Fig. 82 Components Diagram

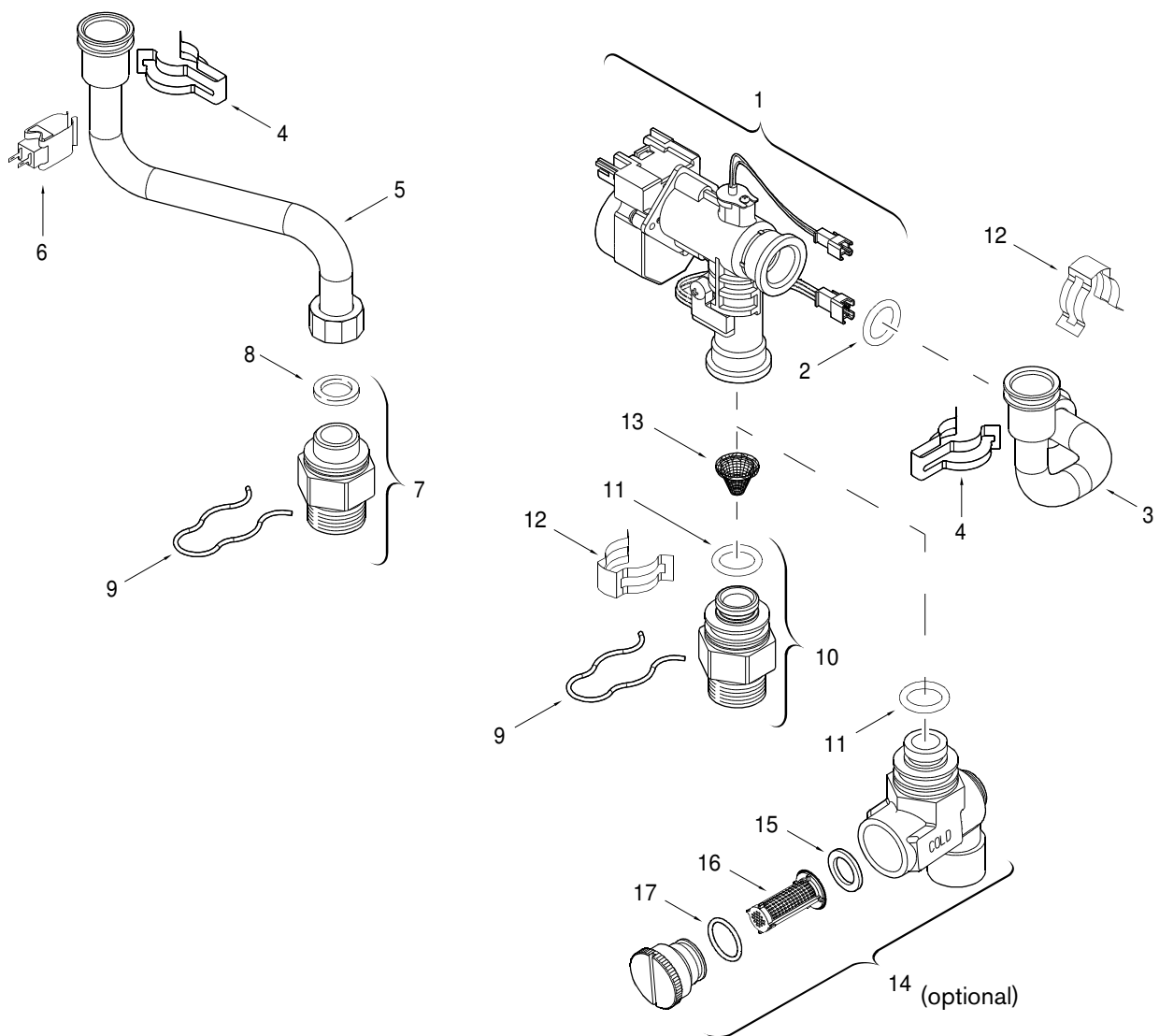
Item	Description	Reference
1	Gas valve	8 707 021 019
2	Pressure tapping	8 703 404 219
3	Washer	8 700 203 041
4	Pressure balance tube	8 700 703 136
5	Pressure balance nut	8 703 300 041
6	Gas supply pipe	8 700 715 442
7	Gas valve washer	8 700 103 014

Table 33

Item	Description	Reference
8	Gas filter	8 700 507 002
9	Gasket	8 704 701 107
10	Gas / Fan connector	8 705 202 140
11	Washer	8 704 701 062
12	Regulation screw	8 703 404 220
13	O-ring	8 700 205 009
14	Screw	2 910 149 181

Table 33

12.2.5 Group 5



6720902989.AA JF

Fig. 83 Components Diagram

Item	Description	Reference
1	Water valve with engine and temperature sensor	8 708 505 024
2	O-ring	8 700 205 147
3	Cold water pipe	8 700 715 443
4	Pipe connection clip	8 701 201 028
5	Hot water pipe	8 700 715 469
6	Temperature sensor	8 700 400 015
7	Outlet fitting	8 703 305 349
8	Inlet / Outlet washer	8 710 103 045
9	Wireform spring	8 701 300 025

Table 34

Item	Description	Reference
10	Inlet fitting	8 703 305 348
11	O-ring	8 700 205 157
12	Watervalue clip	8 716 102 607
13	Water filter	8 700 507 001
14	Inlet fitting with filter (optional)	8 703 305 356
15	Washer (optional)	8 700 103 764
16	Water filter (optional)	8 700 507 059
17	O-ring (optional)	8 700 205 231

Table 34

12.2.6 Group 6

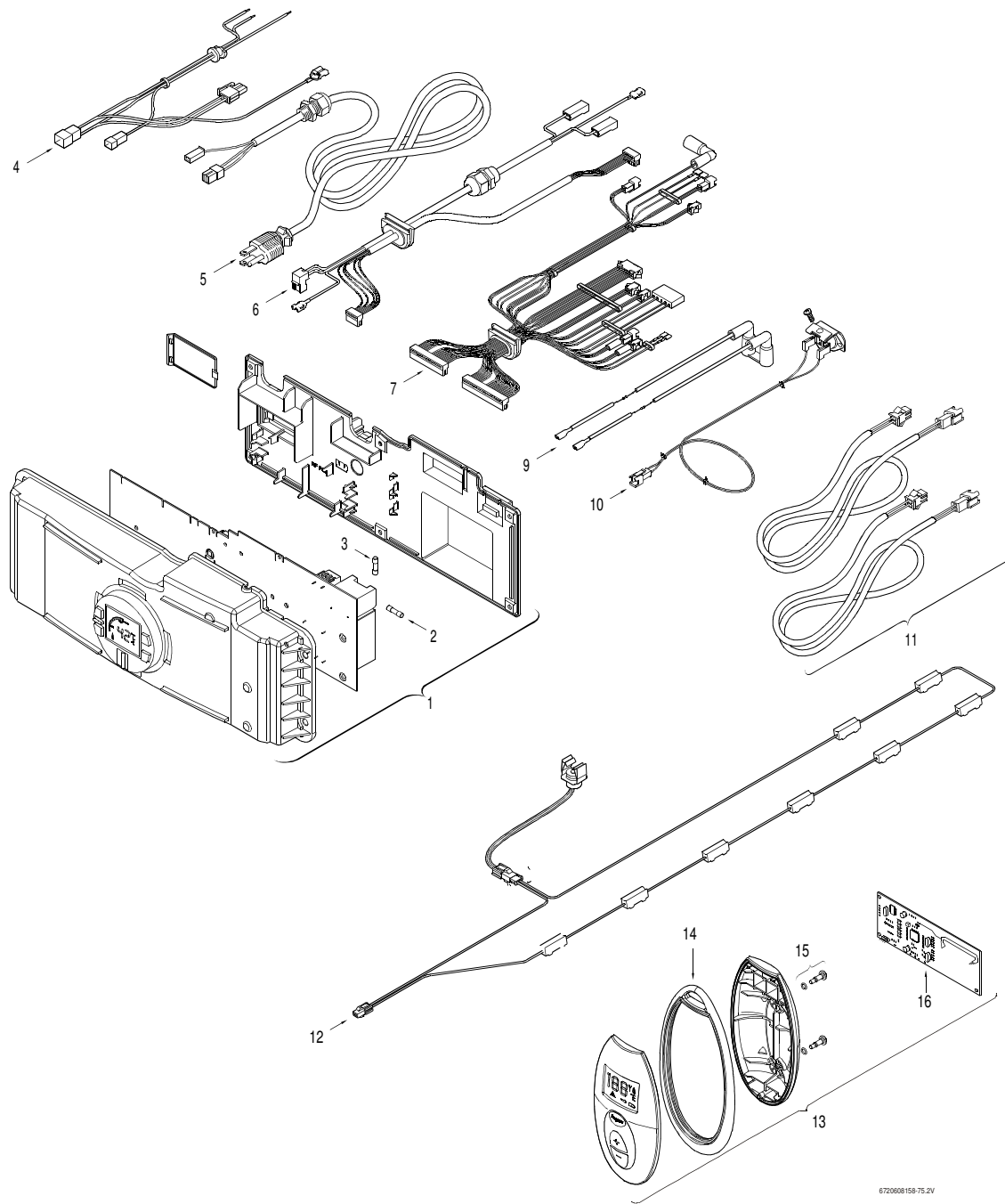


Fig. 84 Components Diagram

Item	Description	Reference
1	Control unit - C 1210 ES	8 707 207 367
1	Control unit - C 1210 ESC	8 707 207 369
2	Fuse T2.5A	1 904 521 342
3	Fuse T1.6A	8 700 609 008
4	Power supply cables	8 704 401 371
5	Power supply cord	8 704 401 378
6	Fan cables	8 704 401 347
7	Wire harness	8 704 401 348

Table 35

Item	Description	Reference
9	Electrode cables	8 704 401 346
10	Flue gas limiter	8 700 400 032
11	Kit Intelligent Cascading	7 709 003 962
12	Anti freeze kit	7 709 003 665
13	Remote control (optional)	TSTAT2
14	Shaped seal (optional)	8 700 201 012
15	Screw (optional)	8 703 401 109
16	Printed circuit transceiver (optional)	8 708 300 123

Table 35