

## Technical Service Bulletin:

# Pressure Transducer Replacement

Models: Bosch IDS R-410A Heat Pumps



# BOSCH



### WARNING

#### Dangerous operation, injury or property damage!

Improper servicing could result in dangerous operation, injury or property damage. The operations described below must be performed by qualified personnel.

### Background

If a pressure transducer is deemed ineffective and needs to be replaced, a new pressure transducer can now be installed on the existing suction port of the condenser following the procedure below. The advantage of this is a quick replacement in minutes compared to hours, no refrigerant has to be removed, and no brazing is required which can damage the new transducer.



Figure 1

### Replacement Procedure

1. Route the new pressure transducer through the low voltage wire grommet on the side of the condenser.

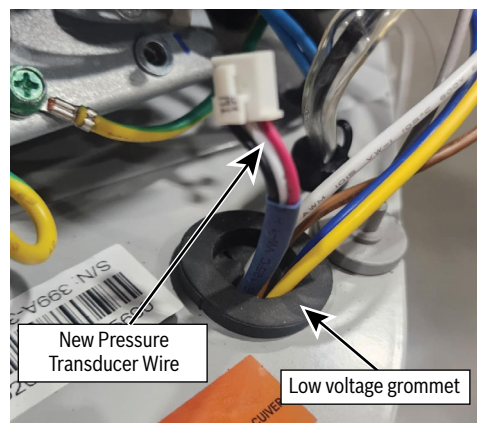


Figure 2

2. Unplug old pressure transducer from the main PCB board and plug new pressure transducer in the same location.

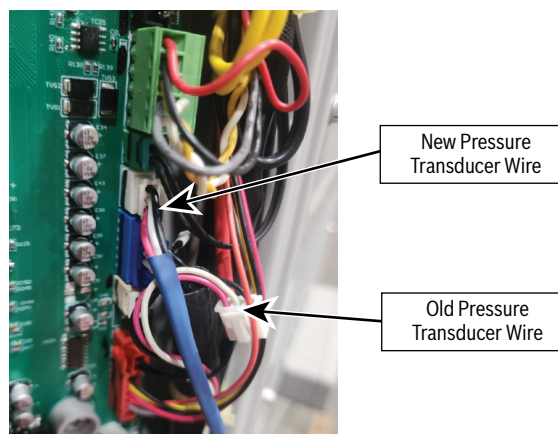


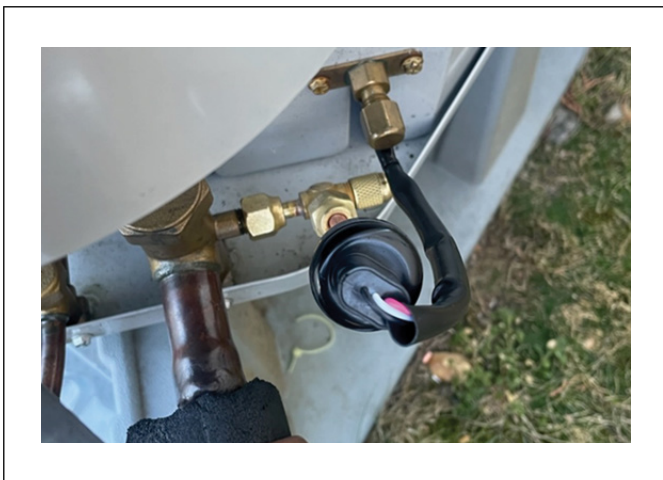
Figure 3

3. Mount a 1/4" FE SAE swivel flare service tee with depressor (field supplied) on to the existing suction port of the condenser.



Figure 4

4. Add a flare nut and flaring to the bottom of the copper tube extending from the pressure transducer then mount it on 1/4" FE SAE Swivel Flare Tee
5. Make sure there is no air inside the pressure transducer and the 3 way valve.



If you have any questions regarding the information provided in this document, please contact our Technical Support team by phone at 1-800-283-3787, or via email at [ac.techsupport@us.bosch.com](mailto:ac.techsupport@us.bosch.com).



Bosch Thermotechnology Corp.  
65 Grove Street  
Watertown, MA 02472  
Tel: 1-800-283-3787  
[www.bosch-homecomfort.us](http://www.bosch-homecomfort.us)