

AppLoader 6.5

Download Enabling Software for Bosch WSHP DDC Controllers



BOSCH

Installation Manual

Table of Contents

1	Key to Symbols and Safety Instructions	4
1.1	Key to Symbols	4
2	Introduction	4
2.1	What is AppLoader?	4
3	Installing AppLoader	5
3.1	Setup Wizard	5
3.2	.Clipping File	6
4	Downloading Memory (.clipping file) to a DDC Controller	7
5	Troubleshooting	12

1 Key to Symbols and Safety Instructions

1.1 Key to Symbols

Warnings



Warnings in this document are identified by a warning triangle printed against a grey background. Keywords at the start of a warning indicate the type and seriousness of the ensuing risk if measures to prevent the risk are not taken.

The following keywords are defined and can be used in this document:

- ▶ **DANGER** indicates a hazardous situation which, if not avoided, will result in death or serious injury.
- ▶ **WARNING** indicates a hazardous situation which, if not avoided, could result in death or serious injury.
- ▶ **CAUTION** indicates a hazardous situation which, if not avoided, could result in minor to moderate injury.
- ▶ **NOTICE** is used to address practices not related to personal injury.

Important information



This symbol indicates important information where there is no risk to people or property.

2 Introduction

2.1 What is AppLoader?

AppLoader is a free software that enables approved field technicians and individuals to download programs to a controller using a laptop. It is a One-to-One downloading application, meaning a .clipping file can be downloaded to one controller at one time.

AppLoader can connect to any Bosch DDC controller over a Serial (RS-485) to USB connection and requires a USB-L cross-over cable (see Figure 1).



Figure 1 USB-Link Cable – 8733 927 403



WARNING:

- ▶ This product can expose you to chemicals including Lead and Lead components, which are known to the State of California to cause cancer and birth defects or other reproductive harm. For more information go to www.P65Warnings.ca.gov.

3 Installing AppLoader

Insert mini CD into CD/DVD drive and install the driver for the USB-L cable or go to: <https://www.bosch-climate.us/support-center/download-center/downloads-for-fhp-products/controls-fhp-products.html> and download the .zip file that contains the application.

Create a folder on your local disk drive to save the AppLoader installation files and extract the AppLoader installation files into the folder you created.

- ▶ Double-click the setup.exe file
- ▶ Follow the Setup Wizard

3.1 Setup Wizard



Please note, images may correspond to different version of the AppLoader software. This should not affect the installation process.

1. Installer will launch.

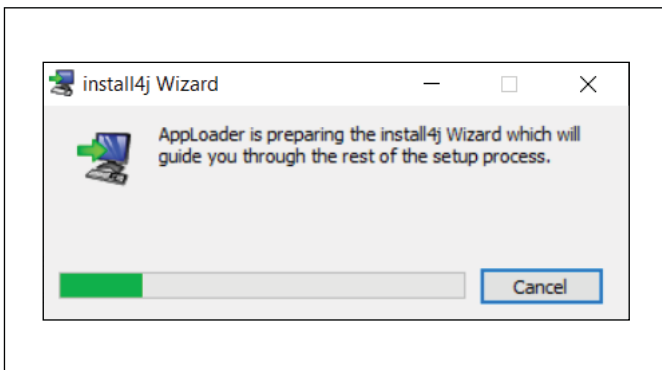


Figure 2

2. When the Introduction Screen pops up, Select Next or Cancel if you do not want to continue.

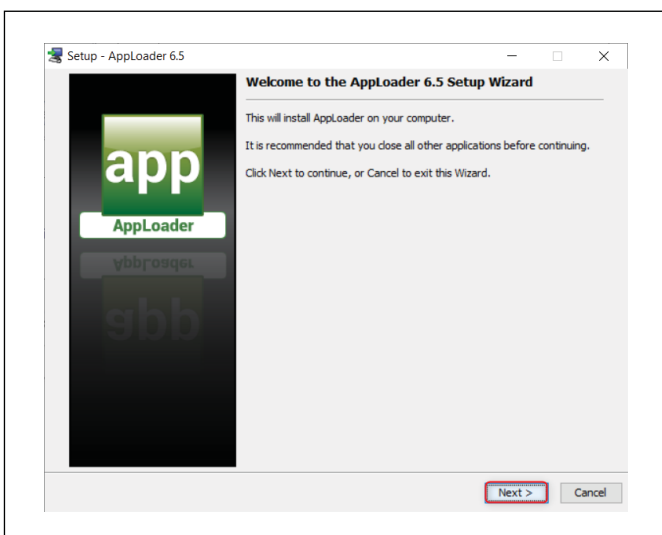


Figure 3

3. Accept the terms of the EULA by clicking in the selector next to I Accept. Then select Next.

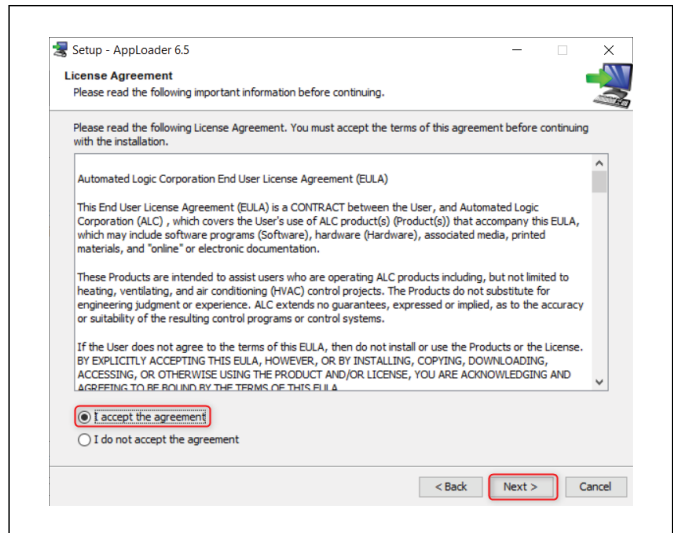


Figure 4

4. Select destination directory or accept default and click Next.

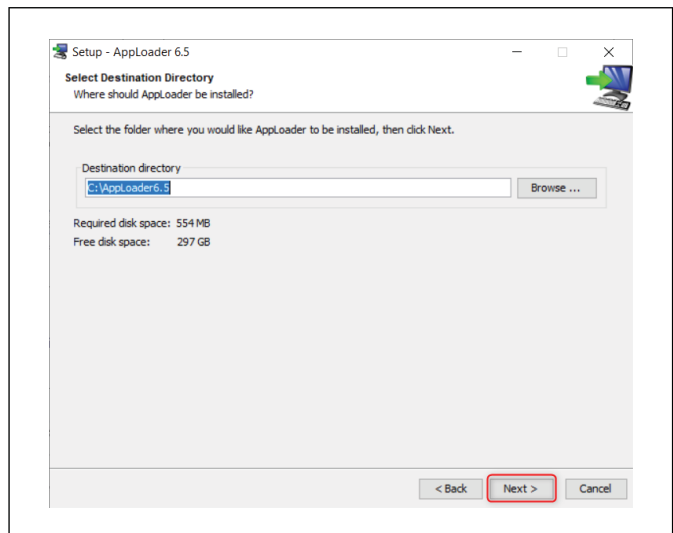


Figure 5

5. Edit the Select Start Menu folder if you want to create a shortcut and click Next.

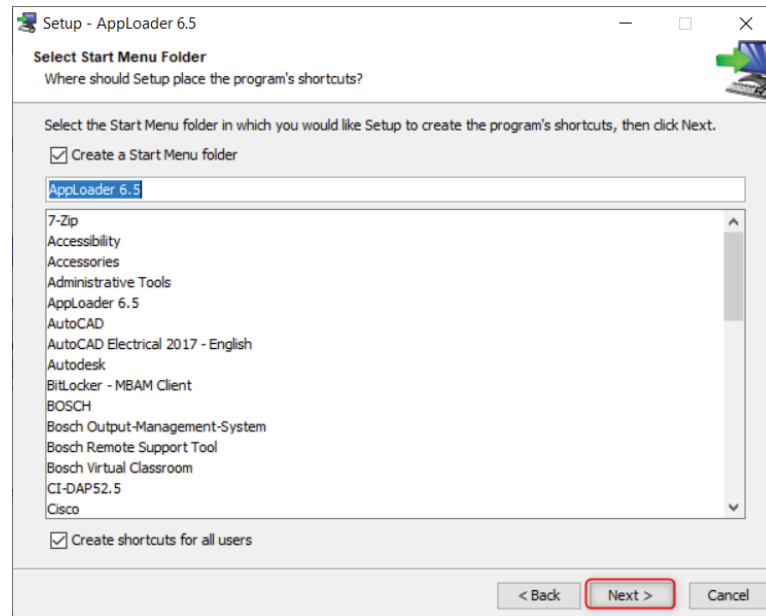


Figure 6

6. Click Next to complete installation.

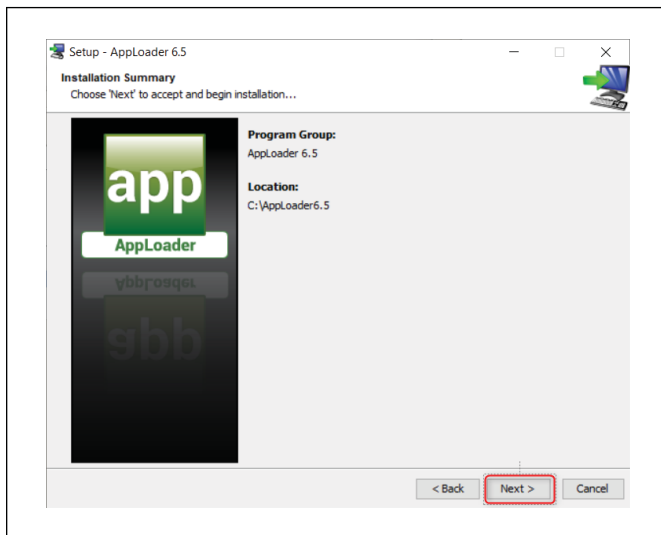


Figure 7

3.2 .Clipping File

AppLoader uses a .clipping file to download memory to your controller. The secure clipping file is obtained from Bosch Thermotechnology and makes up the software configuration for the controller. The provided file must be saved to an accessible location on the computer/laptop to be used for the download.

4 Downloading Memory (.clipping file) to a DDC Controller

1. Establishing Communication.

- Plug USB-L (Bosch Thermotechnology part number 8733-927-403) cable to the computer and controller before launching AppLoader. The DDC controller must be connected to a 24Vac source and powered on.

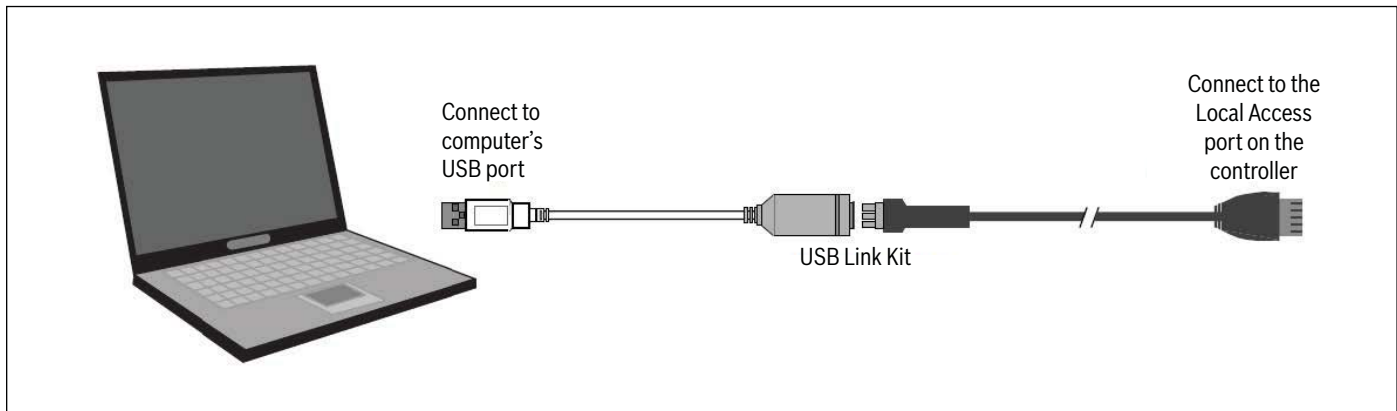


Figure 8

2. Verifying port settings.

- Navigate to the computer's Devices and Printers page (in Windows) and note the COM port used for the cable (labeled Silicon Labs CP210x USB to UART Bridge).

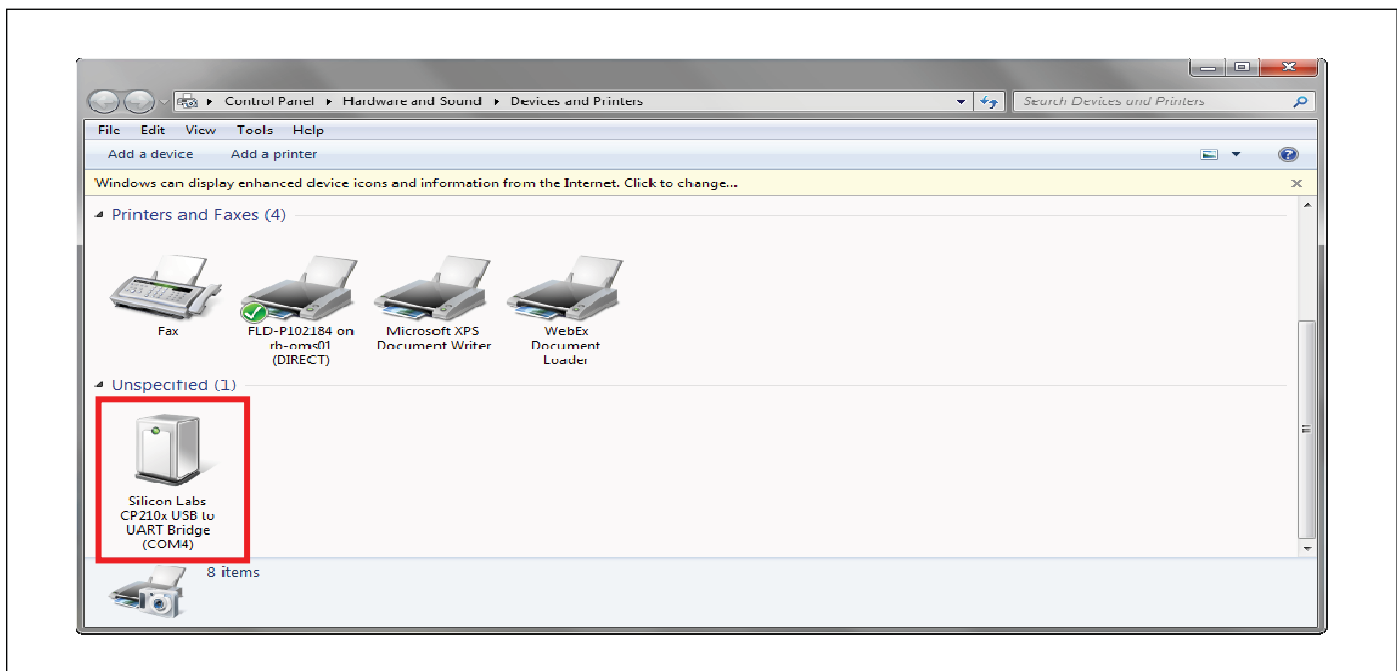


Figure 9

3. Launching AppLoader and checking settings.

- ▶ Start AppLoader program: Click Start > All Programs > AppLoader or browse to your program location.
- ▶ Verify **Enable Alarms Delivery** is checked under Options > Preserve Parameters. This should be enabled by default.



Figure 10

4. Selecting the Connection protocol to the controller – Rnet.

- ▶ **Rnet** should be selected by default.



Figure 11

5. Selecting the Access Port used for the USB Link cable.

- ▶ Select the COM port value that matches the port selected for the USB-L cable under **Devices and Printers** or on the **Device Manager** for Windows. **This step is crucial in establishing communication with the controller.**

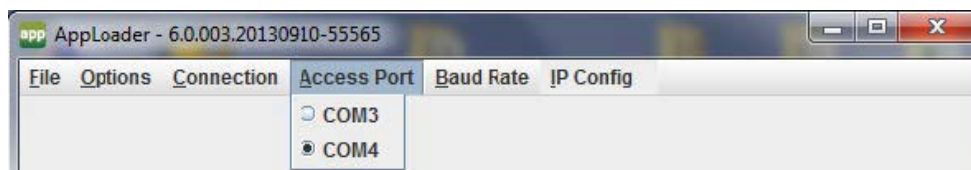


Figure 12

6. Verifying Baud Rate is 115200 (default setting).

- ▶ Default speed is set to 115200.

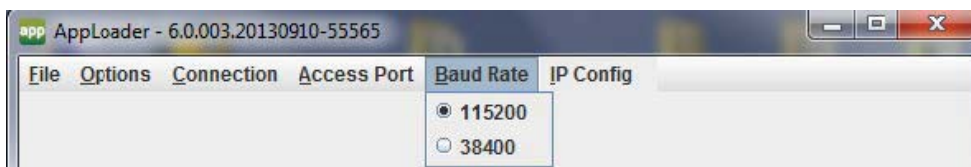


Figure 13

7. Opening the saved .clipping file

- Select File/Open and browse to the location of the saved .clipping file that was supplied, as shown in the example below:

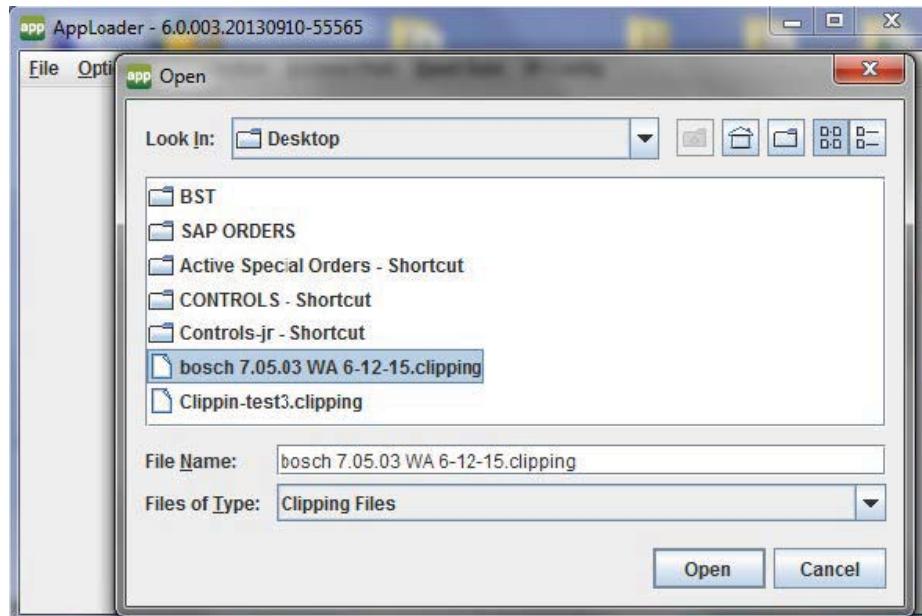


Figure 14



In the above example the file named “**bosch 7.05.03 WA 6-12-15.clipping**” file was saved to the Desktop.

8. Building the .Clipping file

- Select the Build button (build process lasts approximately 1 minute).

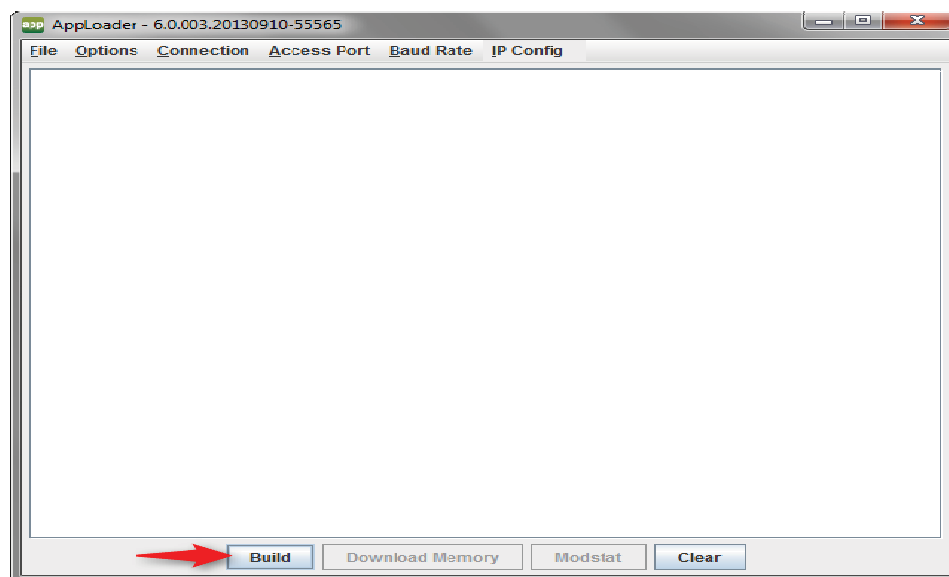


Figure 15

9. Performing a Modstat to further verify communication with the controller (Optional)

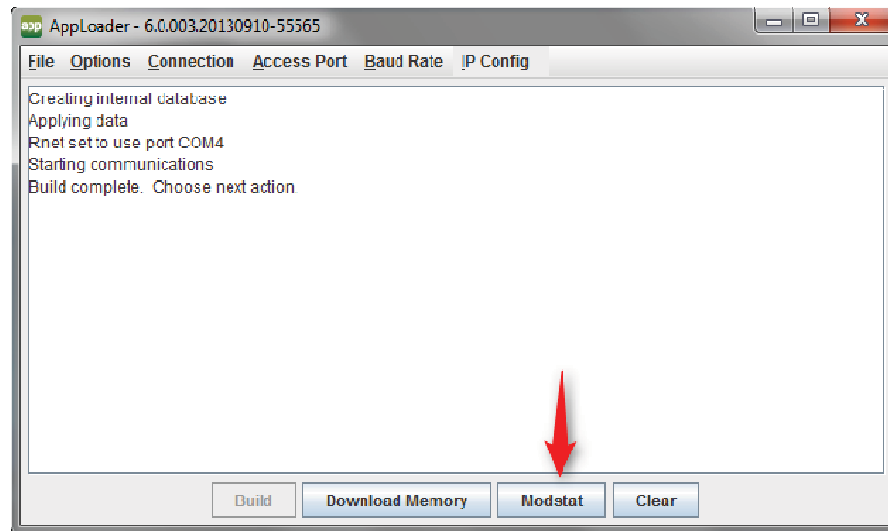


Figure 16

10. Downloading Memory to Controller

- The below screen information ending with **"Build Complete. Choose next action"** is displayed after a successful build of the clipping file. At this point select the "Download Memory" button to initiate the download process.

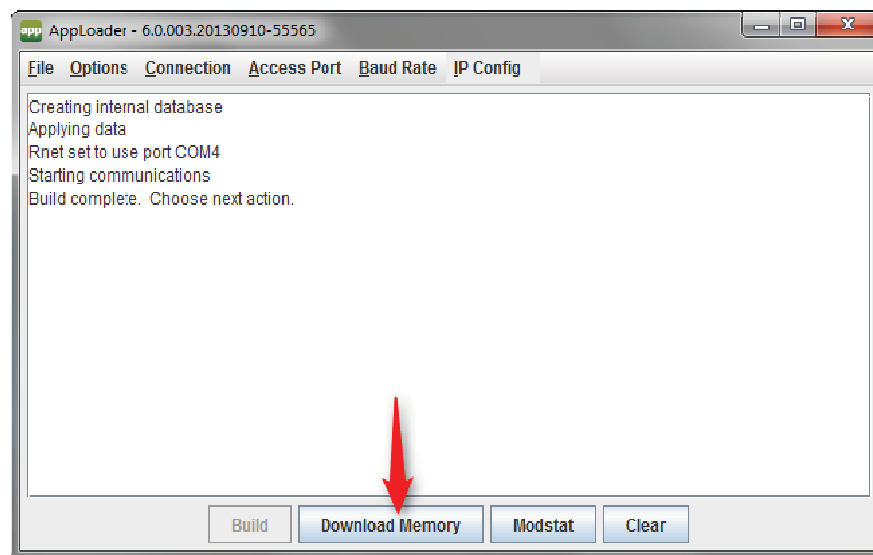


Figure 17

11. Confirming BACnet Device Instance number

- ▶ The device instance is typically read from the device; Select **Use factory autoassign device ID (528000)** and click OK to begin downloading.



Figure 18

12. Completing the Download Process.

- ▶ The download process lasts anywhere between 3 and 5 minutes depending on the files size. The message **"Download Successful"** is displayed once the process is completed successfully. Allow approx 30 seconds after the message is displayed for program to be archived to flash memory (green and red LEDs for RUN and ERROR respectively on the controller flash alternately during this process).
- ▶ Run another Modstat to verify program status.

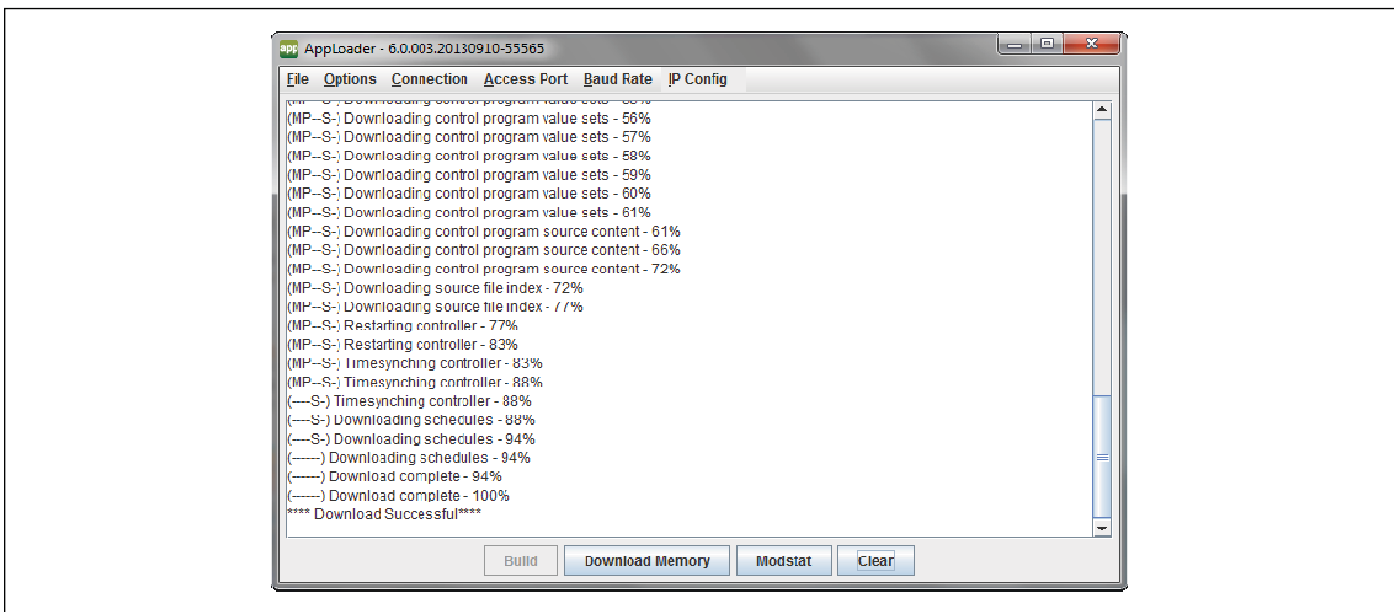


Figure 19

5 Troubleshooting

1. If AppLoader application fails to start verify that no other program that uses the USB-L cable is running. Such applications include Virtual BACview and WebCtrl.
2. The first crucial step in downloading software to a controller is establishing a connection. If the connection is not established the “Build” portion of the process will not be completed successfully. If build is not successful (Build Complete not displayed) check the following:
 - a. Verify COM port for device matches port selected on AppLoader (page 7).
 - b. Verify USB-Link cable connection between controller and laptop is secure.
 - c. Verify controller is powered on by a 24Vac source, and power LED indicator for controller is on (green light).
3. It is possible for the download process to be interrupted and not complete successfully (100%) if communications is lost. If this happens just click the “Download Memory” button to restart the download process. If download keeps failing contact Tech Support as the clipping file may be damaged.
4. It is good practice to run a Modstat after building a clipping file to verify existing software on the controller (if any) as well as communication. A Modstat provides a status check on the health of the existing program currently running on the subject controller. Information includes:
 - a. A date and time stamp for the download
 - b. Software application version
 - c. Status of flash archive
 - d. Number of programs loaded and running (these should match)
 - e. Controller serial number

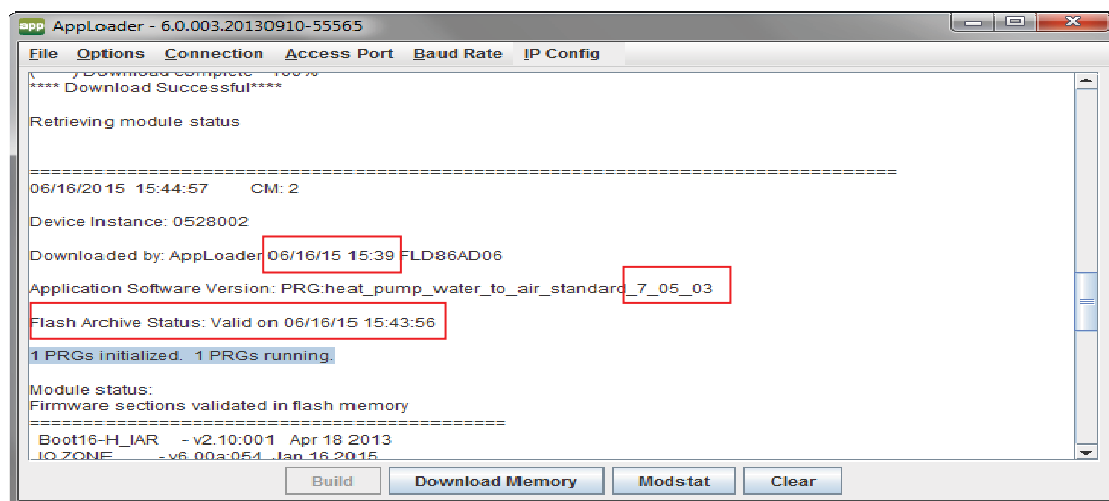


Figure 20

NOTES:

United States and Canada

Bosch Thermotechnology Corp.
65 Grove Street
Watertown, MA 02472

Tel: 1-866-642-3198
Fax: 1-603-965-7581
www.bosch-thermotechnology.us